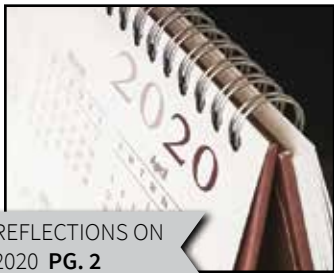
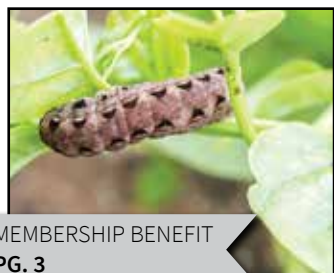




INSIDE



REFLECTIONS ON
2020 PG. 2



MEMBERSHIP BENEFIT
PG. 3



AG REPORT
PG. 7

KCFB Working for You IN 2020



2020 will long be remembered as the year when the work of countless industries ground to a halt. But as our members continued the essential work of farming, Kings County Farm Bureau never stopped working on your behalf. While we weren't able to host many of our typical annual events, our staff and board of directors remained committed to providing education, promotion and representation of local agriculture. Here are some of the ways we helped support and advocate for our members and the ag community during this unprecedented year.

- Co-hosted a seminar on new employment laws affecting employers in 2020.
- Hosted the 2020 Wine vs. Beer Showdown, our most popular annual fundraiser.
- KCFB President Brian Medeiros and Secretary/Treasurer Shane Bickner graduated from Leadership Farm Bureau.
- Brought crime-detecting tool SmartWater CSI to Kings County in an effort to reduce rural crime.
- Partnered with several Valley ag organizations to host a Conservation Management Plan Workshop.
- Received a Specialty Crop Block Grant in partnership with Madera and Tulare County Farm Bureaus which will allow us to host grower field days highlighting conservation practices implemented on specialty crop farms.
- Awarded scholarships of \$1,000 each to nine local high school graduates planning to pursue a career in agriculture.
- Financially supported Curtimade Dairy's legal efforts against the City of Corcoran for alleged groundwater contamination.
- Honored Dennis Tristao with the 2020 KCFB President's Award in honor of his many years of service to KCFB and the ag industry.
- In September, we began contributing a bi-weekly column to the Hanford Sentinel focusing on issues facing Valley ag.
- As part of our commitment to growing the organization, we recruited 11 new Friends of Farm Bureau with the help of our new Director of Government and Member Relations Paula Vinzant.
- Contributed to the efforts to defeat Prop 15 by installing over 50 "No on Proposition 15" signs throughout the county, in addition to a six-week social media campaign.
- Assisted the Kings County Ag Commissioner with distributing cloth and N-95 masks and hand sanitizer.
- Raised over \$11,000 to support ag education with the Harvest Classic Golf tournament.
- Reinstated the Kings County Farm Bureau Water Committee, which was taxed with working on the Kings County groundwater export ordinance and other water issues affecting Kings County.
- Formed the Kings County Farm Bureau Legislative Committee to better represent Kings County agriculture on legislative issues in California and the nation.
- Attended more than 30 Kings County Board of Supervisors meetings, and contributed to issues like the passage of a new hemp ordinance and promotion of local COVID-19 testing.
- Attended three meetings with Congressman T.J. Cox.
- Executive Director Ference was appointed to the Kings County Economic Development Corporation Board of Directors and served on the Kings County Agriculture Advisory Committee.
- Answered media requests from news outlets including the Hanford Sentinel, ABC 30 and The Business Journal.
- Hosted the first KCFB Virtual Showcase, which had over 80 participants in attendance.

Non-Profit Org.
U.S. Postage
PAID
Permit #1831
West Sacramento, CA
95691



Purpose

Protect, preserve and enhance agriculture in Kings County

Vision

Ensure that every farmer has the right to farm and protect their heritage

Values

Our Members | Proactive Representative
Reliable | Trusted Resource

Officers

President: Brian Medeiros
Vice President: Kevin Robertson
Secretary/Treasurer: Shane Bickner

Directors

John Ellis	Jared Little
Todd Fukuda	Michael Miya
Jon Garcia	Brian Potter
Dino Giacomazzi	Brian Rodrigues
Garrett Gilcrease	Brandon Sargent
Keith Grabow	Jared Silveira
Pete Hanse	Helen Sullivan
Monty Hoggard	Frank Zonneveld

Executive Director

Dusty Ference
dusty.ference@kcfb.org

Farm Life Editorial

Amy Fienen
afienen@kcfb.org
(559) 246-6433

Government and Member Relations

Paula Vinzant
pvinzant@kcfb.org

Farm Life Designer

Beth Greene

CFBF District Representative

Jenny Holterman

Contact

870 Greenfield Ave., Hanford, CA 93230
Phone: (559) 584-3557
www.kcfb.org



Kings County Farm Bureau



@KingsFarmBureau



@KingsFarmBureau

Kings County Farm Bureau's "FarmLife" does not accept responsibility for statements by advertisers or for products advertised in "FarmLife," nor does Farm Bureau accept responsibility for statements or expressions of opinion other than content showing authorship by an officer, director, or employee of Farm Bureau or its affiliates.

© Kings County Farm Bureau, 2020

Reflections on the trials and triumphs of 2020

By Dusty Ference, Executive Director



Dusty Ference

As 2020 grinds to a close and we reflect on the trials and tribulations that accompanied this year, let those challenges not foreshadow the gifts the year has provided and the good we've all achieved. If you haven't, I encourage you to read the cover of this issue and take a look at the

KCFB Working for You in 2020 summary showcasing some of the reasons you belong to King County Farm Bureau.

As I sat down with my calendar book (yes, I still use a book that I write in) to summarize this year's activities, it seemed there would be nothing to report. However, when I got to the end of the year, I was pleasantly surprised. The dread began because I could not initially see through the hardships of this year. The feelings of accomplishment came when I realized

what KCFB accomplished despite the challenges. I'm sure if you take the time to think about what you've accomplished this year, you'll be pleasantly surprised also.

As we begin 2021, remember that Kings County Farm Bureau is your organization, and we will work hard for you no matter the project. We are excited to share new initiatives to protect, preserve and enhance agriculture while improving our organization. Next year will include opportunities to add directors to our board, members to our committees, and staff to the office. If any of that interests you, contact the office and watch future issues of "Farm Life" to learn more.

I hope you enjoyed a wonderful Thanksgiving with family and friends and found many things to be thankful for. On behalf of myself, the KCFB staff and board of directors, we wish you the happiest Christmas and New Year. 🙌



WORKING IN PARTNERSHIP TO DETER CRIME

Now available in Kings County




Available for members to purchase at the KCFB office




THIEVES BEWARE

KINGS COUNTY AGRICULTURAL COMMUNITY FORENSICALLY PROTECTED BY SMARTWATER®

www.SmartWaterCSI.com

©TM SmartWater, the SmartWater yellow atom logo, handprint logo and THIEVES BEWARE are trademarks of SmartWater Limited. SmartWater is a proprietary forensic asset marking System and Strategy protected by worldwide trademarks and patents.



Farm Bureau MEMBERSHIP BENEFIT



XenTari® Biological Insecticide Dry Flowable

INSECT CONTROL

XenTari® Biological Insecticide Dry Flowable is a highly selective insecticide for use against destructive larvae (worms) of lepidopterous insects for over 200 crops. XenTari has outstanding efficacy against armyworms and diamondback moth larvae. The active ingredient in XenTari is a pure, potent strain of *Bacillus thuringiensis* var. *aizawai* (Bta) composed of protein crystals and viable endospores. It's a great integrated pest management tool and is easy on beneficial insects to fit in any production system - conventional, sustainable and/or organic.



The active ingredient in XenTari is a pure, potent strain of *Bacillus thuringiensis* var. *aizawai* (Bta) composed of protein crystals and viable endospores. It's a great integrated pest management tool and is easy on beneficial insects to fit in any production system - conventional, sustainable and/or organic.

PRODUCT BENEFITS

- Effective Armyworm and Diamondback Moth Control
- Sustainable - Highly Selective Control, Easy on Beneficial Insects and Fast Re-Entry
- Superior Formulation - Advanced DF Formulation Means Easy and Effective Mixing with Optimal Coverage and Better Control
- OMRI Listed for Organic Production

GARVER
PUMP SERVICE
Serving The Central Valley

CELEBRATING OVER 40 YEARS

24-Hour Service

Lic #547257

(855)622-7837 TOLL FREE

DOMESTIC & IRRIGATION PUMPS • SALES • REPAIRS

VISA SINCE 1976 MASTERCARD

www.carver-pump.com

Your ad could be HERE!



For advertising rates & specifications:
editor@kcfb.org (559) 537-5822

Firestone
IN-FIELD SERVICE
WHEN YOU NEED IT MOST

We are specially trained and fully equipped to meet your on-farm, in-field tire service and replacement needs
Call us for on-farm deliveries and on-the-spot tire repair

BILLINGSLEY TIRE INC
6 WEST D STREET
LEMOORE CA 93245
(559) 924-3481
www.billingsleytireinc.com

Kings County Rural Crime Report

Unit investigates a number of area thefts

Contributed by Detective Ben Moore

As the year approaches its end, the Kings County Sheriff's Office Rural Crimes Unit continues to be very active. We took a theft report in the area of 21st and Jackson Avenue of a Honda quad from Sandridge Farms. At the time of the theft, Sandridge believed a forklift was also stolen; however, the forklift was located in the area of 21st and Laurel avenues and was returned. The quad is still outstanding.

The unit assisted the Kern County Sheriff's Office Ag Unit with the investigation and apprehension of a pomegranate thief. Employees with The Wonderful Company witnessed a subject stealing a truckload of pomegranates (on the Kern County side near I-5 and Devils Den Road) and maintained a visual of the suspect until law enforcement arrived. The suspect, who is from Kettleman City, was arrested by the Kern County Sheriff's Office and booked into their jail on theft charges.

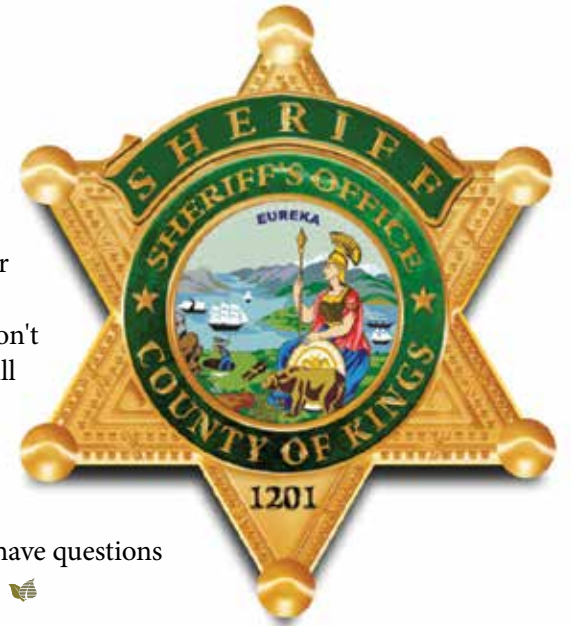
We assisted with a theft investigation of generators that occurred at a solar field in the area of 18th and Kent avenues. The unit acquired surveillance footage that captured the suspect vehicle and we are currently working on trying to identify it.

With the assistance of patrol and the detective division, our unit executed a search warrant at 13364 10th Ave. regarding an illegal marijuana grow. Approximately 226 plants were eradicated and one stolen vehicle was located. The same units executed another illegal marijuana grow search warrant at 7374 14th Ave., but the grow had already been harvested and no plants were located.

The unit took a theft report in the 9000 block of 6th Avenue regarding a stolen diesel trap wagon trailer. The trailer was located a day later in the area of Hanford-Armona Road and 3rd Avenue and was returned to its owner.

Finally, we want to continue to remind everyone about the Owner Applied

Number (OAN) program we offer to the public. We will issue you a California OAN number if you don't have one already have one and will stamp your equipment with that number, free of charge. Once again, thank you for staying vigilant and for your assistance during our investigations. If you have questions or concerns, please call any time. 🙌



Task Force Sergeant Rod Shulman:

559-469-4004

Detective

Carlos Santos:

559-904-6893

Detective Ben Moore:

559-589-3629

Detective Kody Holt:

559-369-8928



PACIFIC AG
INSURANCE AGENCY, INC.
License # 0C84245

Allow us to utilize our background, knowledge, and expertise to go to work for you...



Commercial | Farm | Workers' Compensation | Tribal | Life & Health | Employee Benefits | Home | Auto & More

Hanford 559.584.3391 Corcoran 559.992.1245 Chowchilla 559.665.3434

Reminder for Ag Employers: California's minimum wage increases on Jan. 1

As is has every year since 2017, California's minimum wage is increasing on Jan. 1. In 2017, California's minimum wage began a series of increases intended to raise the state minimum wage to \$15 an hour by 2023. The next increase takes effect on Jan. 1, when the state minimum wage will increase by one dollar per hour to \$13 per hour for employers with 25 or fewer employees and to \$14 per hour for employers with 26 or more employees. 🇺🇸

California Minimum Wage Increases		
RATE: JANUARY 1ST	25 EMPLOYEES OR LESS	26 EMPLOYEES OR MORE
2020	\$12	\$13
2021	\$13	\$14
2022	\$14	\$15
2023	\$15	\$15 (no change)

Lic. Class A & C57
#826935

Kaweah Pump, Inc.

General Engineering Contractor

SERVING:
AGRICULTURE • DAIRY • MUNICIPALITIES
INDUSTRIAL • DOMESTIC

559.747.0755

kaweahpump.com • kaweahwelldrilling.com
info@kaweahpump.com

DEVELOPMENT & REHABILITATION SERVICES

- Well Video Surveys
- Well Development & Yield Testing
- Up to 1000HP Development Pumps
- Well Swaging • Swabbing • Brushing
- Acid Wash & Other Chemical Treatments
- Fishing Services • Well Abandonment

CONSTRUCTION SERVICES

- Agricultural Concrete Pads
- Custom Pump Facilities

MACHINE SHOP SERVICES

- Full Service Centrifugal Pump Machine Shop
- Custom Short Couple Lift Pump Fabrication
- Discharge Fabrication • Mid-Stretch Fabrication
- In-Field Welding, Pipe Repair & Fabrication

WELL DRILLING

- Air Rotary • Mud Rotary • Ag & Domestic

ELECTRICAL SERVICES

- Complete Pump Electrical Services
- Power Company Management
- Variable Frequency Drives
- Power Relocation to New Well • Electrical Panels
- Transformer Pads • New Services • Upgrades

PUMP SERVICES

- In-House Pump Designs
- Deep Well Vertical Turbines - All Makes & Models
- Deep Well Submersible Turbines - All Makes & Models
- Custom Built Lift Pumps
- Booster Pumps • Fertilizer Injection Pumps • Domestic Pumps



Own ALL Your Assets

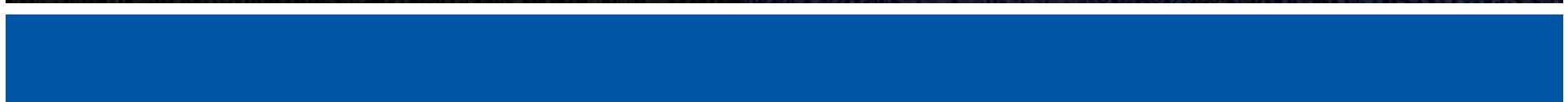
You own your home. You own your business.
Why not own the electricity that powers them?
Unleash the power and the profitability of solar
and unleash a new revenue stream.

Call us today for more information and ask for a
FREE, NO OBLIGATION energy analysis.
Or, visit us online.

559-410-8640 www.RSI.SOLAR

RENEWABLE SOLAR

Exceptional People. Exceptional Performance.™



Ag Commissioner's Compliance Report



Jimmy Hook,
Agricultural
Commissioner/Sealer

Reminder of the Pink Bollworm Cotton Plowdown and Host-Free Monitoring Program

Contributed by Lynda Schrupf, Deputy Ag Commissioner-Sealer

With over 86,000 acres of cotton planted in Kings County, it's the time of year when growers must remember the importance of ensuring that all the fields are brought into compliance with the Pink Bollworm Cotton Plowdown regulations before the start of the host-free period. Since their implementation in 1967, plowdown regulations are an integral part of one of the most successful and longest-running integrated pest control programs, commonly referred to as the Pink Bollworm (PBW) Program.

The enforcement of cultural controls, which include planting dates and host-free periods, coupled with sterile PBW moth release, pheromone treatments and the use of *Bacillus thuringiensis* (Bt) cotton in Southern California, have allowed the program to achieve phenomenal results, preventing the establishment of PBW in the cotton growing areas of California.

The program is primarily funded by the cotton growers of California through an assessment on every cotton bale ginned. The portion of the program our office is responsible for is the surveying of all cotton growing areas of the county to ensure compliance with cotton plowdown and the host-free period regulations. Our inspectors will be contacting you regarding any issues they find during the survey and we look forward to working together to achieve compliance.

For a field to be in compliance with the regulations, shredding and tillage, including the uprooting of stubs and incorporation of host material into the soil, must be completed by Dec. 20, 2020. Alternatively, the permit for reduced tillage was approved by CDFA again this year, and with permission from the Ag Commissioner, a reduced tillage system can be implemented by growers under certain conditions.

Under the reduced tillage system, cotton destruction by shredding is still required; however, instead of full incorporation into the soil, the plants need only be tilled in a manner which dislodges the cotton plant root from the soil and ensures plant regrowth will not occur.

Requests to use the reduced tillage option must be received by our office no later than 10 days prior to beginning the use of the reduced tillage system. Feel free to contact the Kings County Agricultural Commissioners office at (559) 852-2830 or agstaff@co.kings.ca.us to submit your request to use reduced tillage. Before your request can be approved, we will set up a time to have an inspector meet with you to determine if the manner which you are implementing the reduced tillage system meets the requirements of the permit.

Upon completion of plowdown requirements, it is important that the host-free period is maintained until the March planting date; any volunteer cotton must be destroyed. A plowdown or host-free period violation can result in a base fine of \$500 per field, plus \$5 per acre not in compliance. Subsequent violations can result in a fine of \$1,000 per field, plus \$10 per acre not in compliance.

Feel free to contact the office at (559) 852-2830 with questions or for additional information. 📞



DIAS LAW FIRM, INC.
ATTORNEYS AT LAW

Michael A. Dias • Jonette M. Montgomery

Sarah M. Hacker • Steven E. Alfieris

Ella Floresca • David M. Lange

Paula C. Clark

Attorneys at Law

Jimmy J. Rodriguez • Alicia D. Wrest

Of Counsel

502 W. Grangeville Blvd.
Hanford, California 93230
Telephone (559) 585-7330
Facsimile (559) 585-7335
www.diaslaw.com



Providing accounting and payroll services to save your business time and money.

559.924.1225
bresslercompany.com

OUTSOURCE YOUR ACCOUNTING TO SAVE TIME AND MONEY.

#FINANCIALFUTURE



YOUR VENTURE | **OUR VENTURE**
AGRICULTURE | YOUR SUCCESS



As the holidays approach, Golden State Farm Credit sends our warmest wishes to you and your family. May your Christmas be full of wonder, joy and a New Year of good health and prosperity.

We are grateful to our members and all who continue to work in agriculture. Happy Holidays from the team at Golden State Farm Credit!



FOR AMERICA'S AGRICULTURALIST

Follow us   

Hanford: 559.584.5401 | Kingsburg: 559.897.5814 | GoldenStateFarmCredit.com

Friends of Farm Bureau sponsors make KCFB's work possible

As a membership supported non-profit organization, Kings County Farm Bureau relies heavily on the generosity of local businesses and the agriculture community. Our Friends of Farm Bureau program is a one-time annual donation that allows businesses to express their commitment to our goals of supporting local farmers through educational programs, training classes, industry workshops, political activism, and community involvement.

The support from our Friends of Farm Bureau sponsors helps ensure the viability and strength of the organization and Kings County family farmers and ranchers well into the future.

Five levels of financial commitment are available for Friends of Farm Bureau annual sponsorships, and we are so thankful to have two diamond, seven platinum, 13 gold, 19 silver, and 26 bronze-level sponsors.

Our valued sponsors are rewarded with the highest level of recognition for their commitment to KCFB's growth and objectives, including recognition on our website and "Farm Life;" ongoing recognition in our e-newsletter; complimentary tickets for the Wine vs. Beer Showdown and Annual Meeting; and acknowledgment as a sponsor for events and programs.

We reached out to a few of our Friends of Farm Bureau for their thoughts on why they've chosen to partner with KCFB in support of the local ag industry. Our sincerest thanks to all those who believe in our organization and the work we do on behalf of our members and the entire agriculture community.

NEEDHAM AG SERVICES PLATINUM

"What I've seen over the years serving on a number of county and state boards is that when the board of supervisors or the planning commission are working on something ag-related, they seek the approval and blessing of their county Farm Bureau. Farm Bureau is the first group people come to, and that's because of their commitment to protecting our legacy for our kids. As the cost of everything related to doing business continues to rise, the only way Farm Bureau can maintain the liquidity needed to work on our behalf is when local businesses support programs like Friends of Farm Bureau. Membership dues alone don't allow them to do the important advocacy work that they do."

~Ed Needham, Owner

RENEWABLE SOLAR PLATINUM

"We at Renewable Solar count it a privilege to be a Friend of Farm Bureau. They conduct important work and add great value to our local communities. KCFB's goals and values dovetail perfectly with ours at Renewable Solar. Our reason for being is to provide the best solutions and the best value to our ag communities and help families and businesses succeed for generations to come. As a member, we have opportunities to get involved in our local ag communities and benefit from experiencing their success. We encourage anyone considering membership to join. Communities thrive by people helping people."

~Ronn Christensen, Marketing Director

ADVENTIST HEALTH GOLD

"Two of the biggest industries in Kings County are agriculture and healthcare. While we both have a large footprint in Kings County, we have very different strengths and resources at our disposal. By becoming a Friend of Farm Bureau, we feel that we are now in a unique position to partner, bringing our

If you'd like more information on becoming a FRIEND OF FARM BUREAU, please call the office at 584-3557 or download the sponsorship form on our website, kcfb.org.

unique perspectives and resources together on initiatives that could improve the health and well-being of the people who live and/or work in Kings County. We very much look forward to future projects and seeing the collective impact we can achieve by working together."

~Rebecca Russell, MPH, RD, Director, Community Well-Being

STONE LAND COMPANY GOLD

"We decided to become a Friend of Farm Bureau because of KCFB's pursuit of educating the general population on the plight that farmers face on a daily basis, while also helping to support policies that help the farmers across our great county. We see the annual Farm Day as a great way to reach out to the youth in the community to offer them a hands-on experience in the world of agriculture. Education of future generations is vital to keeping our agricultural community thriving, and we are glad that the Kings County Farm Bureau shares the same sentiment."

~Tony Azevedo 🍷



Directory of Farm Bureau Supporting Business Members

These businesses and organizations support the agricultural industry and the Kings County Farm Bureau. Please support them and tell them you are a Farm Bureau member. Call us at 584-3557. Friends of Farm Bureau sponsors are noted in **bold** listings. By joining FB as a business member, your business is added to this directory.

ACCOUNTING

Bressler & Company Certified Public Accountants	559-924-1225
M. Green and Company LLP	559-584-2751

ASSOCIATIONS

California Women for Agriculture	559-737-8899
Kings River Conservation District	559-237-5567

AUTO DEALERS & REPAIR

Billingsley Tire	559-924-3481
Jones Collision Center	559-924-2169
Maaco Collision & Auto Painting	559-924-3000
Richard's Chevrolet-Buick	559-992-3158

BANKING/FINANCIAL

Bank of the Sierra	559-585-6700
Bank of the West	559-802-4066
Central Valley Community Bank	559-323-3493
Citizens Business Bank	866-578-0658
Farm Credit West	559-584-2681
Golden State Farm Credit	559-584-5401
Rabobank	559-587-0218

BROKERS & COMMODITIES

Baker Commodities Inc.	559-582-0271
Buttonwillow Warehouse Co.	559-992-5120
Calcot Ltd.	661-327-5961
Overland Stockyards	559-582-0404
Penny Newman Grain Company	559-448-8800
Tulare Lake Compost	559-840-4368

CHEMICALS & APPLICATORS

Blair Air Services Inc./	
Blair Ground Services	559-924-1276
Crop Production Services	559-584-5583
Diversified Crop Services	559-582-5644
Gar Bennett LLC	559-638-6311
Innovative Ag Services LLC	559-731-4924
Lakeland Dusters	559-992-5716
SNF Agriculture	559-309-4301
TriCal Inc.	559-673-5237
Valley Ag Spraying	559-772-5515
Verdegaal Brothers Inc.	559-582-9205

CUSTOM SERVICES

All Valley Printing/	
Treefrog Print Shop	559-584-5444
Danell Brothers Inc.	559-582-1251
Dias & Fragoso Inc.	559-584-8036
Garcia & Sons Hay Harvesting	559-707-4420
Hanford Roofing Company	559-582-5607
McCann & Sons Hay Service	559-925-9110
Mello Chipping	559-589-0300
Netto Ag Inc.	559-585-2097
Stoney's Sand & Gravel	559-924-9229
Swinger Pruning Services	559-816-7711
Warmerdam Orchard Services	559-924-4662

DAIRIES/DAIRY SUPPLIERS

Kings Dairy Supply Inc.	559-582-9459
Summerhill Dairy	559-468-6554
Vet Pharmaceutical Inc.	559-582-6800

EQUIPMENT DEALERS & REPAIR

Hanford Equipment	559-582-0443
Lawrence Tractor Co.	559-582-9002
Linder Equipment Co.	559-685-5000
Quality Machinery Center	559-707-1638
Quinn Company	559-992-2193

FARM SUPPLY

AgSeeds Unlimited	559-923-1800
Evangelho Seed Co.	559-924-9554
West Valley Supply	559-924-3442

FARMS & RANCHES

Gary Robinson	559-779-5541
Grabow Farming	559-816-4590
J.G. Boswell Co.	559-992-5011
Keenan Farms	559-945-1400
Miya Farms	559-309-3300
Stone Land Co.	559-945-2205
Sullivan Farming LLC	559-289-2452
Summerhill Dairy	559-804-8148
Taylor Farms	559-584-3798

FOOD SERVICES

Avila Acres Country Gourmet	559-584-5935
Eddie's Catering	559-707-8796
Kings River Produce	559-587-9387
Pizza Factory	559-992-3148
Superior Dairy	559-582-0481

INSURANCE SERVICES

Bacome Insurance	559-584-3323
Carl Nelson Insurance	559-584-4495
Der Manouel Insurance Group	559-447-4600
Golden State Crop & Insurance Services	559-587-9007
Mackey & Mackey Insurance Agency	559-583-9393
Mitchell Insurance Services	559-713-1315
Pacific Ag Insurance Agency	559-584-3391
The Zenith	877-581-8237

IRRIGATION/PUMPS/WELLS

Carver Pump	855-622-7837
Grabow Well Drilling Inc.	559-362-5172
Kaweah Pump Inc.	559-747-0755
Kings County Water District	559-584-6412
Laguna Irrigation District	559-923-4239
Lakeside Irrigation Water District	559-584-3396
Myers Brothers Well Drilling Inc.	559-582-9031
Myers Well Drilling	559-906-0930
Rain for Rent/Westside Pump	559-693-4315
Westlands Water District	559-905-6736

LABOR

Sunrise Farm Labor	559-945-2292
--------------------	--------------

MANUFACTURES

Dean Beck's Machine Shop	559-582-4144
Jim Harp's Stainless Steel Welding	559-582-6011
Morgan & Slates Manufacturing & Supplies	559-582-4417
R-N-R Welding	559-584-0213
Sawtelle & Rosprim Machine Co.	559-992-2117
Smith Welding Shop	559-584-8652

PETROLEUM

Buford Oil Co. Inc.	559-582-9028
Dassel's Petroleum	559-582-8515
Gary V. Burrows Inc.	559-924-2064
J.C. Lansdowne Inc.	559-651-1760
Roe Oil Co.	559-584-5690
Valley Pacific Petroleum	559-732-8381

PROCESSORS

County Line Gin Inc.	559-854-7489
Keenan Farms	559-945-1400
Marquez Brothers International, Inc.	559-584-8000
Olam SVI	559-584-2711
Warmerdam Packing LP	559-584-9211

PROFESSIONAL SERVICES

Dias Law Firm Inc.	559-585-7330
Griswold, LaSalle, Cobb, Dowd & Gin LLP	559-584-6656
Kahn, Soares & Conway LLP	559-584-3337
Kings County EDC	559-585-3576
Zumwalt-Hansen & Associates Inc.	559-582-1056

REAL ESTATE SERVICES

Pearson Realty	559-732-7300
Sierra View Realty	559-410-5557

SOLAR ENERGY

CalCom Solar	661-234-0978
Coldwell Solar	888-705-5055
First Solar	415-935-2507
REC Solar	717-515-4519
Recurrent Energy	415-675-1500
Renewable Solar	559-816-5088

TRANSPORTATION

E & B Bulk Transportation	559-582-9135
Mesa Alta Transportation	559-250-1270
Mid Valley Disposal	559-237-9425

UTILITIES

Pacific Gas & Electric	559-263-5308
unWired Broadband	844-650-3278

FRIENDS *of* FARM BUREAU

DIAMOND



Nationwide[®]
is on your side



Platinum



Gold

All Valley Printing
Adventist Health
Bacome Insurance Agency
Daniel C. Salas Custom Harvesting
Dias Law Firm Inc.

Gar Bennett LLC
J.C. Lansdowne Inc.
M Green & Company LLP
Pacific Gas & Electric
Stone Land Co.

Tachi Palace Casino Resort
The Wonderful Company
Verdegaal Brothers

Silver

Coldwell Solar Inc.
Danell Custom Harvesting
Excellence Medical Group
Griswold, LaSalle, Cobb, Dowd & Gin LLP
Helena Agri-Enterprises LLC
J.G. Boswell Company Inc.
JKB Energy Inc.

Kahn, Soares & Conway LLP
Mello Chipping
Morgan & Slates Manufacturing & Supplies
Olam Spices & Vegetable Ingredients
Pacific Ag Insurance
Quality Machinery Center
Rain for Rent

Southern California Edison
Summerhill Dairy
S&W Seed Company
Tulare Lake Basin Water Storage District
Wells Fargo Bank

Bronze

Agland Protective Services
Billingsley Tire Inc.
Bressler & Company Certified Public Accountants
CalWest Rain
Central Valley Energy Coalition
Garton Tractor

Granger Water Specialties
Grower Direct Nut Company
Hanford Equipment Co.
Innovative Ag Services LLC
JP Honey Farms
Keenan Farms
Keller Motors

Kings Dairy Supply Inc.
Laguna Irrigation District
Mello Chipping
Pearson Realty Inc.
Rabobank
Richard's Chevrolet
Schuil & Associates

Sullivan Farming LLC
Torrent Resources
Tulare Lake Compost
Valley Ag Spraying
Wilbur Ellis Inc.



We're in this together

We're a true member-owner cooperative – offering loans, leases, competitive rates and unmatched service. **We are your partners in agriculture – your success is our success.**



DINUBA
559.591.9378

HANFORD
559.584.2681

TULARE
559.684.1478



FarmCreditWest.com



FARM CREDIT WEST®

Committed. Experienced. Trusted.