



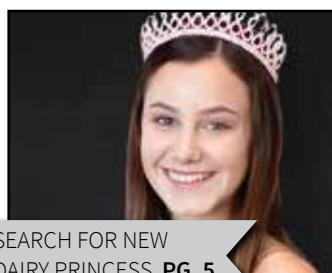
INSIDE



MEMBER TO MEMBER **PG. 3**



AG COMMISSIONER'S REPORT **PG. 4**



SEARCH FOR NEW DAIRY PRINCESS **PG. 5**

Kings County faces delays in vaccinating ag workers

By Dusty Ference, Executive Director

The availability of COVID-19 vaccines continues to create mass confusion in California, as well as here in Kings County. The Kings County Farm Bureau office receives several inquiries a week asking how and where the agriculture workforce can get their vaccines. Although the agriculture industry is technically "qualified" for vaccination right now, there's more to the story.



Vaccine distribution is a tangled web of government procedures. At its hub, the federal government is distributing vaccines to states based on a matrix. States have created their plans for further distribution based on their criteria. Vaccines are delivered to county health departments before shipment to health care providers to administer in California. And we can't forget about the large retail pharmacy locations and certain other health care providers getting vaccines directly from the federal government. Are you confused yet?

Along the way, numerous hurdles are preventing most of the general population from getting vaccinated. The federal government can only distribute the vaccines they receive from the manufacturers. They are dividing those by population

"Vaccines" continued on page 2

KCFB offers threat assessment training to help keep workplaces safe

By Amy D. Fienen

In 2019, a Visalia dairyman was shot and killed by a former employee over a labor dispute. The suspect worked for the dairy for 13 months and was fired after failing to show up for work. He spent several months harassing the family following his termination before returning to the property and shooting the owner in broad daylight.

Workplace disputes that end violently have become far too commonplace, but knowing how to identify a potential threat can help thwart attacks before they happen. Kings County Farm Bureau is partnering with the Central



"Threat Assessment" continued on page 10

Non-Profit Org.
U.S. Postage
PAID
Permit #1831
West Sacramento, CA
95691



Purpose

Protect, preserve and enhance agriculture in Kings County

Vision

Ensure that every farmer has the right to farm and protect their heritage

Values

Our Members | Proactive Representative
Reliable | Trusted Resource

Officers

President: Brian Medeiros
Vice President: Kevin Robertson
Secretary/Treasurer: Shane Bickner

Directors

John Ellis	Jared Little
Todd Fukuda	Michael Miya
Jon Garcia	Brian Potter
Dino Giacomazzi	Brian Rodrigues
Garrett Gilcrease	Brandon Sargent
Keith Grabow	Jared Silveira
Pete Hanse	Helen Sullivan
Monty Hoggard	Frank Zonneveld

Executive Director

Dusty Ference
dusty.ference@kcfb.org

Farm Life Editorial

Amy Fienen
afienen@kcfb.org

Farm Life Advertising

Paula Vinzant
pvinzant@kcfb.org
(559) 901-4278

Farm Life Designer

Beth Greene

KCFB District Representative

Jenny Holterman

Contact

870 Greenfield Ave., Hanford, CA 93230
Phone: (559) 584-3557
www.kcfb.org



Kings County Farm Bureau



@KingsFarmBureau



@KingsFarmBureau

Kings County Farm Bureau's "FarmLife" does not accept responsibility for statements by advertisers or for products advertised in "FarmLife," nor does Farm Bureau accept responsibility for statements or expressions of opinion other than content showing authorship by an officer, director, or employee of Farm Bureau or its affiliates.

© Kings County Farm Bureau, 2021

"Vaccines" continued from page 1

and considering other factors before vaccines are distributed. Each state splits up its allocation by county and the state-approved matrix. The next step is where things get interesting.

California's tiered system is largely age-based second only to health care workers. The state reviews the number of health care workers and residents over age 65 (the tier currently eligible for vaccination in most cases) and splits doses accordingly. The largest counties in the state receive more vaccines than smaller counties. Creating most of the confusion around vaccine distribution is this system that allocates vaccines to a percentage of specific populations. Please do not take this statement of confusion as criticism. We are navigating an impossible situation.

Kings County's weekly allocation is small, and a number of residents are anxious to receive a vaccine. These two factors make it difficult to move to sub-sections of tier-one eligibility. This is frustrating for local residents because Fresno and Tulare counties have progressed to vaccinating sub-sections and are administering doses to agriculture

workers in some cases.

For now, there is no estimate of when eligibility will increase. I'm quite sure this is not what you were hoping to learn from reading this. The good news is the number of vaccines being received in California has increased in the past few weeks.

KCFB continues to meet with members of the distribution stream. As we learn more about the availability of vaccines, we will update the industry. For now, we ask you to remain patient. Public Health is working hard to keep Kings County safe and is doing everything in its power to vaccinate as many residents as possible.

In the meantime, if your agriculture operation needs N-95 masks, hand sanitizer or cloth masks, please contact our office at (559) 584-3557 to arrange a time to pick up these free supplies. 🙌

THANKS to the following KCFB board and community members for serving on our 2021 committees. The board of directors voted to form a new committee to serve the ag community this year. The Crop Protection Committee will focus on pesticides and other crop protection issues. Please call the KCFB office at (559) 584-3557 if you're interested in serving on this committee.

EXECUTIVE

Brian Medeiros

President

Kevin Robertson

Vice President

Shane Bickner

Secretary/Treasurer

Dino Giacomazzi

Past Pres.

Pete Hanse

Past Pres.

Monty Hoggard

Past Pres.

Michael Miya

Past Pres.

John Ellis

Appointed

Frank Zonneveld

Appointed

FINANCE

Shane Bickner

Brian Potter

Brandon Sargent

Brian Medeiros

Jared Silveira

Jon Garcia

Kevin Robertson

LEGISLATIVE

Justin Mendes

Amy Wolfe

Kevin Robertson

Laura Brown

Shane Bickner

WATER

Frank Zonneveld

Helen Sullivan

Keith Grabow

Kevin Robertson

Monty Hoggard

Shane Bickner

Tony Azevedo

NOMINATING & BYLAWS

Erik Hansen

Michael Miya

Mike Newton

Nathan Heeringa

Pete Hanse

WINE VS. BEER

Todd Fukuda

Brandon Sargent

Helen Sullivan

Jared Silveira

John Ellis

SCHOLARSHIP

Brandon Sargent

Brian Potter

Helen Sullivan

Jackie Giacomazzi

Michael Miya

Steve Walker

MEMBERSHIP

Amy Ward

Brandon Sargent

Brian Potter

Jon Garcia

Kevin Robertson

CROP PROTECTION

TBD

Member to Member *People, Products, Prosperity*

JC Lansdowne, Inc. By Amy D. Fienen

The Lansdowne family has nearly a century's worth of experience distributing fuel in the Valley. A gold Friend of Farm Bureau, JC Lansdowne, Inc. is proud of their long legacy of serving area farmers and ranchers.

Ryan Lansdowne represents the fourth generation of his family to run the 76-branded petroleum marketing and distribution company known as JC Lansdowne, Inc. The company saw its start in 1924 when his great-grandfather, Robert McKim, worked as a direct server consignee jobber for Union Oil Company of California. Robert's son-in-law, Jim Lansdowne, joined the business, and in the 1950s, they became the distributor JC Lansdowne. Steven Lansdowne was next in line to run the company, followed by his son, Ryan, who came on board in 2003, immediately following his graduation from St. Mary's College.

Ryan Lansdowne said JC Lansdowne is likely the largest locally owned fuel distributor from Bakersfield to Fresno. They buy and sell petroleum products including gasoline, diesel and lubricants to deliver to the ag community. They do the majority of their business with farmers, ranchers and dairymen in Kings and Tulare counties, and as a family-run business, are committed to giving back to the community that has supported them for so long.

The Lansdownes support countless area non-profits, including Hanford Christian, Central Valley Christian and Hanford and Visalia hospitals. During last year's initial COVID-19 outbreak, they provided three weeks' worth of meals for hospital workers at Kaweah-Delta. The Visalia Chamber of Commerce and Tulare County Farm Bureau have both recognized them as Agri-business of the Year.

Ryan Lansdowne credits his parents, Steven and Linda, for their tireless commitment to philanthropic causes on behalf of the family business.

"We want to give back because we love the community," he said. "A spirit of generosity and community service have been massive components in the success of our business."



Lansdowne said that personalized service, competitive pricing and a great staff are what keep customers coming back and referring their colleagues. Their biggest competitors are corporate distributors that don't offer a personal touch on the service side.

"When you call us, you're not talking to a salesman, you're talking to the owner," Lansdowne said. "We don't make buying fuel feel like buying a car where first you deal with the sales guy, then the sales manager. With us, you deal directly with me."

JC Lansdowne has been a long-time supporter of Kings County Farm Bureau. Last year, they were the title sponsor for the Harvest Classic Golf Tournament,

which raises money to support ag education programs. Additionally, they are Friends of Farm Bureau and advertise in "Farm Life."

Lansdowne said the networking and marketing opportunities that result from their involvement in Farm Bureau more than pay for the monetary support they provide.

"Farm Bureau is a great platform for farmers and ranchers to get the information they need, and our clients have a sense of pride in doing business with a Farm Bureau member," he said. "There's an intrinsic value you can't put a dollar amount on."

JC Lansdowne, Inc. can be reached at (559) 651-1760.

The "Member to Member" feature is our way of promoting the members that help make our work possible through their financial support. Please consider doing business with companies who show their commitment to the local ag industry through their support of Farm Bureau.

KCFB involved in launch of new outreach program

Kings, Madera, and Tulare county farm bureaus are announcing the launch of the Valley Farm Bureau Specialty Crop Hub and Rural Education outreach program. VFB SHARE is funded by a California Resource Conservation District grant awarded to the three county farm bureaus to develop farm demonstrations and an online resource hub for specialty crop producers in the South San Joaquin Valley.



During the next 18 months, the VFB SHARE project will work to bring together innovative practices related to specialty crop production and provide virtual and live platforms for growers to share ideas, ask questions and see demonstrated some of the latest technologies for adaption to their specialty crops.

The first virtual farm demonstration will be hosted in late April with a specialty crop company based primarily in Madera County. A video will be available to preview in mid-April, with a virtual question and answer session filmed for review online. We will release specific details for when the video and question/answer session is made public for viewing.

This first demonstration will focus on mating disruption using the technology of puffers, and other integrated pest management solutions being used on fig and almond orchards. The use of "puffers," or pressurized aerosol cans that dispense

"KCFB Outreach" continued on page 10

Firestone

IN-FIELD SERVICE

WHEN YOU NEED IT MOST

We are specially trained and fully equipped to meet your on-farm, in-field tire service and replacement needs

Call us for on-farm deliveries and on-the-spot tire repair

BILLINGSLEY TIRE INC

6 WEST D STREET
LEMOORE CA 93245
(559) 924-3481
www.billingsleytireinc.com




Ag Commissioner's Compliance Report



Jimmy Hook,
Agricultural
Commissioner/Sealer

Efforts are underway to detect and prevent Asian Citrus Psyllid

Contributed by Lynda Schrupf, Deputy Agricultural Commissioner-Sealer

In the last few months of 2020, there were sporadic Asian Citrus Psyllid (ACP) detections across California. With confirmed ACP detections in multiple counties (Kern, Kings, Madera, San Luis Obispo, Santa Barbara, Tulare, Contra Costa and Santa Clara), areas that historically have low ACP activity, the Kings County Department of Agriculture remains committed to its early detection and prevention programs.

The county's early detection program services approximately 300 Asian Citrus Psyllid traps year around, concentrating most of the effort on homeowner citrus host plants to prevent any ACP movement into commercial groves. When a single ACP was found in a residential yard in Kettleman City in October of 2020, a delimitation trapping plan was immediately activated and resulted in no other ACP detections. While the citrus industry's efforts and collaboration with the California Department of Food and Agriculture have so far kept Huanglongbing (HLB) out of commercial groves, these recent detections have the Kings County Department of Agriculture on high alert.

Since we know that ACP have been known to hitchhike on loads of unpacked citrus being moved around the state, it's very important that pre-processed citrus loads are carefully secured with tarps and inspected upon arrival. Every citrus transporter is under an agreement with the ag commissioner to remove all stems and leaves and securely tarp the bins while being transported. Loads arriving in Kings County are met by one of our ag inspectors and are thoroughly inspected. Starting around September and going to about June is when most of the citrus is transported for processing and packing. In 2020, Kings County ag inspectors performed 109 individual transporter inspections.

When citrus trees are shipped to retail stores or nurseries, they are held off sale until a county ag inspector arrives to inspect the plants for ACP. This on-going effort to manage and minimize ACP dispersal across California, and particularly to keep this pest out of Kings County, is paramount to keeping the citrus acreage – although currently relatively small – productive and profitable.

For more information or should you have any questions, please contact Lynda Schrupf, Deputy Agricultural Commissioner, Kings County Department of Agriculture, agstaff@co.kings.ca.us, (559) 852-2830. 📧



As part of the county's efforts to stop the spread of Asian Citrus Psyllid, citrus loads are carefully secured with tarps and inspected upon arrival in Kings County.



Providing accounting and payroll services to save your business time and money.

559.924.1225
bresslercompany.com

OUTSOURCE YOUR
ACCOUNTING
TO SAVE
TIME AND
MONEY.

#FINANCIALFUTURE



DIAS LAW FIRM, INC.
ATTORNEYS AT LAW

Michael A. Dias • Jonette M. Montgomery
Sarah M. Hacker • Steven E. Alfieris
Ella Floresca • David M. Lange
Paula C. Clark

Attorneys at Law

Jimmy J. Rodriguez • Alicia D. Wrest

Of Counsel

502 W. Grangeville Blvd.
Hanford, California 93230
Telephone (559) 585-7330
Facsimile (559) 585-7335
www.diaslaw.com



Kings County Farm Bureau and the Central California Intelligence Center present

Behavioral Threat Assessment: Preventing the Active Shooter

Wednesday, April 14, 2021, 8am - 5pm

Kings County Farm Bureau, 870 Greenfield Ave., Hanford

COURSE DESCRIPTION:

This course is designed to teach an evidence and research based behavioral threat assessment methodology to equip law enforcement and security stakeholders with the skills and tools necessary to identify potentially violent individuals, assess the risks they pose of engaging in targeted violence, proactively manage the risk, and prevent violent attacks that include active shooter and mass casualty events.

COURSE OBJECTIVES:

- Fundamentals of behavioral threat assessment;
- Threat identification, including warning behaviors which potentially indicate a subject is on the pathway to violence to carry out a targeted violent attack; and
- Application of behavioral threat assessment techniques in a variety of contexts and environments, including, but not limited to, the workplace, schools, places of worship, public spaces, and other potentially vulnerable areas in the community.

REGISTRATION:

There is no registration fee. Travel/per diem expenses are the responsibility of the attendee. Register by calling the KCFB office at (559) 584-3557, or email kcfb@kcfb.org.

CERTIFICATE:

This course is POST certified under plan N/A, 1279-22316-20-009. STC# 10322-82703. CCIC/SACRTAC will supply a certificate of completion at the end of the course. This course is eligible for 8 EMS (EMT's & Paramedics) Continuing Education Units (CEU's) at no charge. CEUs are also available for RNs, LVNs and CNAs.

IDENTIFICATION REQUIRED AT CHECK-IN

A special thanks to presenting sponsor



Ed Needham 559-977-7282

Search is underway for 2021 District 7 Dairy Princess

The local dairy industry is now accepting applications from young women wishing to compete for the District 7 Dairy Princess crown.

The winner will represent the dairy industry in District 7 as a spokeswoman and will also represent the California dairy industry in appearances at schools, fairs, industry meetings, service clubs, parades, and with the media. The newly selected Dairy Princess and alternate will participate in a mandatory training, July 5-9, 2021, in which they receive professional development coaching.

Contestants must meet the following requirements: 1) be at least a junior in high school during the current academic school year and not over 21 years of age by contest date; 2) be unmarried; and 3) family must own a dairy farm, work for the dairy industry or show dairy cattle for a 4-H/FFA organization.

More detailed information about qualifications can be found on the application, which is available at www.californiadairyprincess.com/ca-dairy-princesses. Applicants are urged to submit their applications as soon as possible. The application deadline is Monday, April 19, 2021.

This year the District 7 Dairy Princess contest will be held on Friday, June 25. More details on the contest will be released when available. 🙌



Current Dairy Princess Jenna Searcy

BBB ACCREDITED BUSINESS

CARVER

PUMP SERVICE

Serving The Central Valley

24-Hour Service

Lic #547257

(855)622-7837 TOLL FREE

DOMESTIC & IRRIGATION PUMPS • SALES • REPAIRS

VISA **SINCE 1976** **MasterCard**

www.carver-pump.com

**MAKE THIS YEAR,
THE ONE.
HAPPY NEW YEAR!**



559.651.1760 Office 559.651.8156 Fax

Kings County Rural Crime Report

Catalytic convertor and fuel thefts reported last month

Contributed by Task Force Supervisor Rod Shulman

The Kings County Rural Crime Unit is currently investigating the theft of a trap wagon from Medeiros Farming. We have obtained video from their surveillance cameras. We also had two diesel fuel thefts over a two-week period in February. One investigation took place at 9910 Denver Ave. and the other was at Premier Truck Parts. Suspects in the Denver Avenue theft took approximately 400 gallons of red die diesel. The suspects in the Premier Truck Parts investigation took approximately 150-220 gallons of diesel from truck and a tractor. We have video of two suspect vehicles in this case.

We conducted a vandalism investigation at Hanson Farms in Corcoran. Suspects cut the perimeter fence and appeared to go through the property and look in several vehicles and shops. The suspect in this investigation was driving a green Ford Explorer.

We saw a rise in catalytic converter thefts the past month. Lemoore Police Department has had several thefts of catalytic converters that our agency took reports on. Our patrol units were recently involved in a pursuit of the suspect believed to be responsible for the converter thefts throughout the county.



A trailer stolen from the City Of Bakersfield was located by our unit. We contacted the owner and the trailer was returned.

We were contacted by a local farmer regarding bee boxes found in his walnut orchard. This was very unusual as the boxes had no identifying marks other than one with "MARQUETTE" stamped on it. The Kings County Ag Commissioner's office was called and they assisted us with attempting to find a brand or marking on the screens of the boxes. None were located, and a local apiary owner took possession of the boxes until we can locate the rightful owner.

We will post pictures of the suspect vehicles being sought in our investigations on our email list. I will send it out once we receive all the video surveillance from the victims. If you are not on our email list, please give us a call and we will add you to it. Thanks for your assistance and continued support. 🙌

**Task Force Supervisor
Rod Shulman:**
559-469-4004

Detective Carlos Santos:
559-904-6893

Detective Kody Holt:
559-362-8928

**Detective
Colten Verhoeven:**
559-469-6146

GARTON TRACTOR INC.
Since 1954

1-877-TRACTOR
www.gartontractor.com

Brett Garcia
Sales

4780 S. "K" Street
P.O. Box 87 • Tulare, CA 93275
(559) 686-0054 • Fax (559) 686-3718
Mobile (559) 331-3239
bgarcia@gartontractor.com

PACIFIC AG
INSURANCE AGENCY, INC.
License # 0C84245

Allow us to utilize our background, knowledge, and expertise to go to work for you...

Commercial | Farm | Workers' Compensation | Tribal | Life & Health | Employee Benefits | Home | Auto & More

Hanford 559.584.3391 Corcoran 559.992.1245 Chowchilla 559.665.3434

Directory of Farm Bureau Supporting Business Members

These businesses and organizations support the agricultural industry and the Kings County Farm Bureau. Please support them and tell them you are a Farm Bureau member. Call us at 584-3557. Friends of Farm Bureau sponsors are noted in **bold** listings. By joining FB as a business member, your business is added to this directory.

ACCOUNTING

Bressler & Company Certified Public Accountants 559-924-1225
M. Green and Company LLP 559-584-2751

ASSOCIATIONS

California Women for Agriculture 559-737-8899
 Kings River Conservation District 559-237-5567

AUTO DEALERS & REPAIR

Billingsley Tire 559-924-3481
 Jones Collision Center 559-924-2169
 Maaco Collision & Auto Painting 559-924-3000
 Richard's Chevrolet-Buick 559-992-3158

BANKING/FINANCIAL

Bank of the Sierra 559-585-6700
 Bank of the West 559-802-4066
 Central Valley Community Bank 559-323-3493
 Citizens Business Bank 866-578-0658
Farm Credit West 559-584-2681
Golden State Farm Credit 559-584-5401

BROKERS & COMMODITIES

Baker Commodities Inc. 559-582-0271
 Buttonwillow Warehouse Co. 559-992-5120
 Calcot Ltd. 661-327-5961
 Overland Stockyards 559-582-0404
 Penny Newman Grain Company 559-448-8800
Tulare Lake Compost 559-840-4368

CHEMICALS & APPLICATORS

Blair Air Services Inc./ Blair Ground Services 559-924-1276
 Crop Production Services 559-584-5583
 Diversified Crop Services 559-582-5644
 Gar Bennett LLC 559-638-6311
Innovative Ag Services LLC 559-731-4924
 Lakeland Dusters 559-992-5716
 SNF Agriculture 559-309-4301
 TriCal Inc. 559-673-5237
Valley Ag Spraying 559-772-5515
Verdegaal Brothers Inc. 559-582-9205

CUSTOM SERVICES

All Valley Printing/ Treefrog Print Shop 559-584-5444
Danell Brothers Inc. 559-582-1251
 Dias & Fragoso Inc. 559-584-8036
 Garcia & Sons Hay Harvesting 559-707-4420
 Hanford Roofing Company 559-582-5607
 McCann & Sons Hay Service 559-925-9110
 Netto Ag Inc. 559-585-2097
 Stoney's Sand & Gravel 559-924-9229
 South Valley Harvesting 559-308-0871
 Swinger Pruning Services 559-816-7711
 Warmerdam Orchard Services 559-924-4662

DAIRIES/DAIRY SUPPLIERS

Kings Dairy Supply Inc. 559-582-9459
Summerhill Dairy 559-468-6554
 Vet Pharmaceutical Inc. 559-582-6800

ENTERTAINMENT

Tachi Palace Casino Resort 559-924-7751

EQUIPMENT DEALERS & REPAIR

Garton Tractor 559-331-3239
Hanford Equipment 559-582-0443
 Lawrence Tractor Co. 559-582-9002
 Linder Equipment Co. 559-685-5000
Quality Machinery Center 559-707-1638
 Quinn Company 559-992-2193

FARM SUPPLY

AgSeeds Unlimited 559-923-1800
 Evangelho Seed Co. 559-924-9554
 West Valley Supply 559-924-3442
Needham Ag Services 559-977-7282

FARMS & RANCHES

Gary Robinson 559-779-5541
 Grabow Farming 559-816-4590
J.G. Boswell Co. 559-992-5011
Keenan Farms 559-945-1400
 Miya Farms 559-309-3300
Stone Land Co. 559-945-2205
Sullivan Farming LLC 559-289-2452
Summerhill Dairy 559-804-8148
 Taylor Farms 559-584-3798

FOOD SERVICES

Avila Acres Country Gourmet 559-584-5935
 Eddie's Catering 559-707-8796
 Kings River Produce 559-587-9387
 Pizza Factory 559-992-3148
 Superior Dairy 559-582-0481

HEALTH CARE

Adventist Health Care 559-582-9000

INSURANCE SERVICES

Bacome Insurance 559-584-3323
 Carl Nelson Insurance 559-584-4495
 Der Manouel Insurance Group 559-447-4600
 Golden State Crop & Insurance Services 559-587-9007
Mackey & Mackey Insurance Agency 559-583-9393
 Mitchell Insurance Services 559-713-1315
Nationwide Insurance Services 877-669-6877
Pacific Ag Insurance Agency 559-584-3391
The Zenith 877-581-8237

IRRIGATION/PUMPS/WELLS

Carver Pump 855-622-7837
 Grabow Well Drilling Inc. 559-362-5172
 Kaweah Pump Inc. 559-747-0755
 Kings County Water District 559-584-6412
Laguna Irrigation District 559-923-4239
 Lakeside Irrigation Water District 559-584-3396
 Myers Brothers Well Drilling Inc. 559-582-9031
 Myers Well Drilling 559-906-0930
Rain for Rent/Westside Pump 559-693-4315
 Westlands Water District 559-905-6736

LABOR

Daniel C. Salas Custom Harvesting 559-924-2290
 Sunrise Farm Labor 559-945-2292

MANUFACTURES

Dean Beck's Machine Shop 559-582-4144
 Jim Harp's Stainless Steel Welding 559-582-6011
Morgan & Slates Manufacturing & Supplies 559-582-4417
 R-N-R Welding 559-584-0213
 Sawtelle & Rosprim Machine Co. 559-992-2117
 Smith Welding Shop 559-584-8652

PETROLEUM

Buford Oil Co. Inc. 559-582-9028
 Dassel's Petroleum 559-582-8515
 Gary V. Burrows Inc. 559-924-2064
J.C. Lansdowne Inc. 559-651-1760
 Roe Oil Co. 559-584-5690
 Valley Pacific Petroleum 559-732-8381

PROCESSORS

County Line Gin Inc. 559-854-7489
Keenan Farms 559-945-1400
Marquez Brothers International, Inc. 559-584-8000
Olam SVI 559-584-2711
 Warmerdam Packing LP 559-584-9211

PROFESSIONAL SERVICES

Dias Law Firm Inc. 559-585-7330
Griswold, LaSalle, Cobb, Dowd & Gin LLP 559-584-6656
Kahn, Soares & Conway LLP 559-584-3337
 Kings County EDC 559-585-3576
 Zumwalt-Hansen & Associates Inc. 559-582-1056

REAL ESTATE SERVICES

Pearson Realty 559-732-7300
 Sierra View Realty 559-410-5557

SOLAR ENERGY

CalCom Solar 661-234-0978
First Solar 415-935-2507
 REC Solar 717-515-4519
Recurrent Energy 415-675-1500
Renewable Solar 559-816-5088

TRANSPORTATION

E & B Bulk Transportation 559-582-9135
 Mesa Alta Transportation 559-250-1270
 Mid Valley Disposal 559-237-9425

UTILITIES

Pacific Gas & Electric 559-263-5308
 unWired Broadband 844-650-3278

FRIENDS *of* FARM BUREAU

DIAMOND



Nationwide[®]
is on your side



Platinum



Gold

All Valley Printing
Adventist Health
Bacome Insurance Agency
Daniel C. Salas Custom Harvesting
Dias Law Firm Inc.

Gar Bennett LLC
J.C. Lansdowne Inc.
M Green & Company LLP
Mackey & Mackey
Insurance Agency

Pacific Gas & Electric
Stone Land Co.
Tachi Palace Casino Resort
The Wonderful Company
Verdegaal Brothers

Silver

Danell Custom Harvesting
Excellence Medical Group
Griswold, LaSalle, Cobb, Dowd & Gin LLP
J.G. Boswell Company Inc.
Kahn, Soares & Conway LLP
Morgan & Slates Manufacturing & Supplies

Olam Spices & Vegetable Ingredients
Pacific Ag Insurance
Quality Machinery Center
Rain for Rent
Southern California Edison
Summerhill Dairy

S&W Seed Company
Trinkle Ag Flying
Tulare Lake Basin Water Storage District
Wells Fargo Bank

Bronze

Billingsley Tire Inc.
Bressler & Company Certified Public
Accountants
CalWest Rain
Central Valley Energy Coalition

Garton Tractor
Granger Water Specialties
Hanford Equipment Co.
Innovative Ag Services LLC
JP Honey Farms

Keenan Farms
Keller Motors
Kings Dairy Supply Inc.
Laguna Irrigation District
Pearson Realty Inc.

Schuil & Associates
Sullivan Farming LLC
Torrent Resources
Tulare Lake Compost
Valley Ag Spraying

“Threat Assessment” continued from page 1

California Intelligence Center (CCIC) to offer a free training course that will teach participants how to identify potentially violent individuals, assess the risks of violence they may pose, how to manage the risks, and how to prevent attacks that could include a mass casualty event or active shooter situation.

The course, titled “Behavioral Threat Assessment: Preventing the Active Shooter” is not a tactical or response class; it’s more of an awareness class, said CCIC’s Larry Micari.

“This class trains people to look for signals and telltale signs before a shooting happens,” Micari said. “From a human resources standpoint, it gives you an idea of what to look for.”

He said that in most cases, law enforcement is able to recognize a number of warning signs or red flags when investigating workplace-related attacks. Perhaps the employee filed complaints with the human resources department, aired grievances to co-workers or made threats. Unfortunately, Micari said, too often the warning signs aren’t recognized until after a situation becomes

violent and investigators get involved.

This training course aims to help prevent attacks before they happen.

CCIC offers training for police and military agencies across the state, and KCFB is pleased to partner with them to offer this course free of charge to the community thanks to our presenting sponsor, Needham Ag Services.

The course uses evidence and research-based methodology to teach the fundamentals of behavioral threat assessment; threat identification and warning behaviors indicating a potential attack; and how these techniques can be used in the workplace, schools, churches, public spaces and other vulnerable areas.

“Behavioral Threat Assessment: Preventing the Active Shooter” will be held Wednesday, April 14 from 8 a.m. to 5 p.m. at the KCFB office, 870 Greenfield Ave. in Hanford. Pre-registration is required to reserve your spot. Please call the office at (559) 584-3557 or email kcfb@kcfb.org to make your reservation. Additional information can be found in the ad on page 5. 📧

“KCFB Outreach” continued from page 3

pheromones, can reduce insecticide sprays; using the technique on specialty crop acreage could make a big impact. Sex attractants called pheromones are chemicals that female moths give off to attract males for mating. The attractants confuse males so that they cannot find the real females, thereby reducing the codling moth population.

Do you know of an innovative practice that promotes stewardship, sustainability, innovative IPM practices or other conservation strategies? We want to hear from you. Please send your questions, comments or suggestions for future farm demonstration sites to info@vfbshare.org. 📧

Lic. Class A & C57
#826935

Kaweah Pump, Inc.

General Engineering Contractor

SERVING:
AGRICULTURE • DAIRY • MUNICIPALITIES
INDUSTRIAL • DOMESTIC

559.747.0755

kaweahpump.com • kaweahwelldrilling.com
info@kaweahpump.com

DEVELOPMENT & REHABILITATION SERVICES

- Well Video Surveys
- Well Development & Yield Testing
- Up to 1000HP Development Pumps
- Well Swaging • Swabbing • Brushing
- Acid Wash & Other Chemical Treatments
- Fishing Services • Well Abandonment

CONSTRUCTION SERVICES

- Agricultural Concrete Pads
- Custom Pump Facilities

MACHINE SHOP SERVICES

- Full Service Centrifugal Pump Machine Shop
- Custom Short Couple Lift Pump Fabrication
- Discharge Fabrication • Mid-Stretch Fabrication
- In-Field Welding, Pipe Repair & Fabrication

WELL DRILLING

- Air Rotary • Mud Rotary • Ag & Domestic

ELECTRICAL SERVICES

- Complete Pump Electrical Services
- Power Company Management
- Variable Frequency Drives
- Power Relocation to New Well • Electrical Panels
- Transformer Pads • New Services • Upgrades

PUMP SERVICES

- In-House Pump Designs
- Deep Well Vertical Turbines - All Makes & Models
- Deep Well Submersible Turbines - All Makes & Models
- Custom Built Lift Pumps
- Booster Pumps • Fertilizer Injection Pumps • Domestic Pumps

Serving the entire San Joaquin Valley and San Luis Obispo County







Own ALL Your Assets

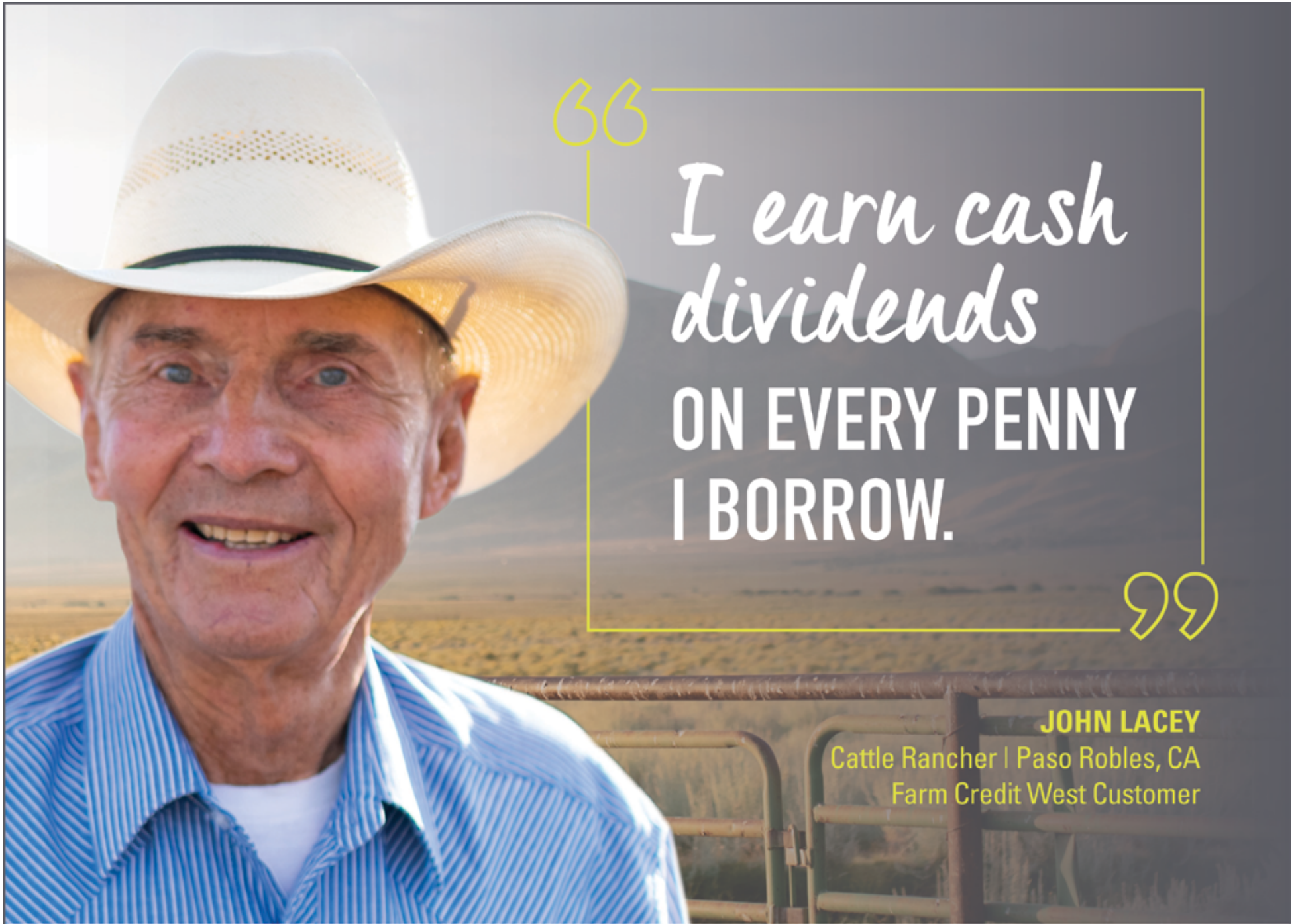
You own your home. You own your business. Why not own the electricity that powers them? Unleash the power and the profitability of solar and unleash a new revenue stream.

Call us today for more information and ask for a FREE, NO OBLIGATION energy analysis. Or, visit us online.

559-410-8640 www.RSI.SOLAR

RENEWABLE SOLAR

Exceptional People. Exceptional Performance.™



“

I earn cash dividends

ON EVERY PENNY I BORROW.

”

JOHN LACEY

Cattle Rancher | Paso Robles, CA
Farm Credit West Customer

For 2020, our members earned 1.5% of average eligible loan balances in cash patronage. This included a special mid-year payment to provide relief from the impact of COVID-19. If you're not earning a portion of your lender's profits back, **it's time to make the switch to Farm Credit West.**

DINUBA
559.591.9378

HANFORD
559.584.2681

TULARE
559.684.1478

FarmCreditWest.com



Committed. Experienced. Trusted.



**WORKING IN PARTNERSHIP TO DETER CRIME
NOW AVAILABLE IN KINGS COUNTY**



**AVAILABLE FOR MEMBERS TO
PURCHASE AT THE KCFB OFFICE**



**THIEVES™
BEWARE**

TM



**KINGS COUNTY
AGRICULTURAL COMMUNITIES
FORENSICALLY PROTECTED
BY SMARTWATER®**

www.SmartWaterCSI.com

©/TM SmartWater, the SmartWater yellow, atom logo, hand-print logo and THIEVES BEWARE are trademarks of SmartWater Limited. SmartWater is a proprietary forensic asset marking System and Strategy protected by worldwide trademarks and patents.