



## INSIDE



WELCOME PAULA VINZANT PG. 3



SEED CERTIFICATION PG. 7



KCFB VIRTUAL SHOWCASE PG. 8

## Proposed neonicotinoid restrictions could prove costly for area farmers

By Amy D. Fienen

Kings County Farm Bureau is asking our members to join us in opposing mitigation measures the Department of Pesticide Regulation (DPR) has proposed for neonicotinoid pesticides in California.

In what the DPR says is an effort to protect bee health and pollinators, they are re-evaluating pesticide products containing the nitroguanidine-substituted neonicotinoid active ingredients, imidacloprid, thiamethoxam, clothianidin and dinotefuran.

What these proposed mitigation measures mean for Valley farmers is less control options for pests. And this comes on the heels of the state ban on chlorpyrifos that took effect in January.

A CDEA economic analysis determined that approximately 60 percent of California's fruit, nut and vegetable crops and more than half their agricultural exports rely on neonicotinoids. According to the report, the cost of alternative products



will lead to a reduction in acreage and substantial cost increases for growers.

KCFB Executive Director Dusty Ference said Valley crops that would be affected by the proposed regulations include tomatoes, cotton, grapes, tree nuts, citrus, bulb crops, and forages like corn and sorghum.

“For pests like aphids, lygus and leaf hoppers that are tough to control, growers will have fewer control options,” Ference said. “In terms of pests like sugarcane aphids, husky flies, Asian Citrus Psyllids or beet leafhoppers, we rely on this class of chemistry for more than one round of treatment with no

*“Neonicotinoid Restrictions” cont’d on page 5*

## Next month’s Harvest Classic Golf Tournament supports ag education programs

By Amy D. Fienen

During a year when nearly everything associated with the word “fun” has been cancelled, Kings County Farm Bureau is proud to announce that our 6th annual Harvest Classic Golf Tournament will take place on Monday, Oct. 19 at the Kings Country Club.

The Harvest Classic is a fundraiser that supports the next generation of local agriculturalists by raising money for Farm Day and scholarships for graduating Kings County seniors who plan to pursue a career in agriculture.

Farm Day has been taking place each March at the Kings Fairgrounds for the past 15 years, and we’re proud of how the event has grown with each passing year. COVID-19 forced the cancellation of Farm Day 2020, but in 2019, we welcomed nearly 2,400 area third-graders to the fairgrounds for an interactive field trip that teaches valuable lessons about the many facets of Kings County ag. The number of students who attend continues to increase, as does the number of industry professionals who want to support Farm Day with their involvement.

“Farm Bureau remains committed to growing Farm Day to help educate Kings County students about the crucial role agriculture



Harvest Classic 2019. File photo

Non-Profit Org.  
U.S. Postage  
**PAID**  
Permit #1831  
West Sacramento, CA  
95691

*“Golf” cont’d on page 4*



### Purpose

Protect, preserve and enhance agriculture in Kings County

### Vision

Ensure that every farmer has the right to farm and protect their heritage

### Values

Our Members | Proactive Representative  
Reliable | Trusted Resource

### Officers

**President:** Brian Medeiros  
**Vice President:** Kevin Robertson  
**Secretary/Treasurer:** Shane Bickner

### Directors

John Ellis	Michael Miya
Todd Fukuda	Brian Potter
Jon Garcia	Brian Rodrigues
Dino Giacomazzi	Brandon Sargent
Garrett Gilcrease	Jared Silveira
Keith Grabow	Helen Sullivan
Pete Hanse	Steve Walker
Monty Hoggard	Frank Zonneveld
Jared Little	

### Executive Director

Dusty Ference  
dusty.ference@kcfb.org

### Farm Life Editorial

Amy Fienen  
afienen@kcfb.org  
(559) 246-6433

### Farm Life Government and Member Relations

Paula Vinzant  
pvinzant@kcfb.org

### Farm Life Designer

Beth Greene

### CFBF District Representative

Jenny Holterman

### Contact

870 Greenfield Ave., Hanford, CA 93230  
Phone: (559) 584-3557  
www.kcfb.org



Kings County Farm Bureau



@KingsFarmBureau



@KingsFarmBureau

Kings County Farm Bureau's "FarmLife" does not accept responsibility for statements by advertisers or for products advertised in "FarmLife," nor does Farm Bureau accept responsibility for statements or expressions of opinion other than content showing authorship by an officer, director, or employee of Farm Bureau or its affiliates.

© Kings County Farm Bureau, 2020

## KCFB invited to contribute to local newspaper

By Dusty Ference, Executive Director



Dusty Ference

KCFB has been invited to contribute a bi-monthly column for the Hanford Sentinel and its weeklies, the Selma Enterprise and Kingsburg Recorder. We're excited for the opportunity to share our message with local consumers and educate them about the important role Farm Bureau and its members play in this community. In case you missed it in the Sentinel, I'm proud to share my first column with you here.

### HOW KINGS COUNTY FARM BUREAU IS WORKING FOR YOU

Kings County Farm Bureau is a non-profit advocacy organization formed in 1918. Its primary goal is to ensure every farmer has the right to farm and protect their heritage. Too often, agriculture is painted in a negative light when someone hears or reads a story on the industry. As an industry, we listen to those stories and often complain to fellow agriculturalists, then move on. We see the work in progress by industry groups like the Farm Bureau and tell ourselves that it is enough. Enough to combat the negative story seen on the news or written by an activist group. Sufficient to convince an elected official that the industry is full of good people trying to do the right thing, which it is. Where we fall short is in telling our story, not letting someone tell it for us.

This column is a place for us to tell that story. To share the story of the world's safest and most reliable food supply, explain the challenges on the horizon impacting the ability to produce that supply, and to ask you occasionally to respond to a call to action that will help keep farming alive in Kings County and California.

In the exceptional year that is 2020, the world has faced challenges never before seen. Agriculture is no exception. Food production in California has met some of the most significant obstacles to demand and resources. Unlike many industries in the state, agriculture did not have the opportunity to stop production and formulate a plan to start again. Pushing the pause button on plant and animal production is not an option. Neither is disrupting the food supply chain. So, what did the industry do? They

put their heads down and kept working. They made sure food was available while consumers stalked their pantries and freezers. They created work plans to protect their employees while at work. They filed reports on water usage, pesticide applications and food safety. They worked countless hours irrigating and managing pests, feeding and milking. They did the things they do every day to ensure the rest of the world can eat. At the same time, they worried about COVID-19 and how it would affect their families, friends and employees.

Telling the story of how your meals make it to your table is the reason for this column. Recognizing the hard-working families that stock the shelves at your local grocery stores and shelves around the world. Thanking your neighbors that work hard every day so that you can eat and pursue your dreams while not worrying about where your food is coming from.

We want you to understand what it takes to put a meal on your table. The challenges in getting it there and how you can help ensure it is their tomorrow. 🌾



502 W. Grangeville Blvd.  
Hanford, California 93230  
Telephone (559) 585-7330  
Facsimile (559) 585-7335  
www.diaslaw.com

**DIAS LAW FIRM, INC.**  
ATTORNEYS AT LAW

**Michael A. Dias • Jonette M. Montgomery**  
**Sarah M. Hacker • Steven E. Alfieris**  
**Ella Floresca • David M. Lange**  
**Paula C. Clark**

*Attorneys at Law*

**Jimmy J. Rodriguez • Alicia D. Wrest**  
*Of Counsel*

**EXACTLY**

what you need to make the most of your operation.



THE NEW 5125ML  
LOW-PROFILE  
TRACTOR

Request a quote at  
[LawrenceTractor.com](http://LawrenceTractor.com)

Visalia  
2530 East Main Street  
(559) 734-7406

Tipton  
380 N Burnett Road  
(559) 752-4251

Hanford  
9213 East Third Street  
(559) 582-9002




## Kings County Farm Bureau Notice of Annual Meeting of Members

Tuesday, Oct. 13, 2020 at 5 p.m.  
via web conference  
RSVPs required to attend  
RSVP to [kcfb@kcfb.org](mailto:kcfb@kcfb.org)

### Publication of Nominating Committee Report

As provided in Article VI, Section 2 of the corporation's bylaws, the Nominating Committee of the corporation's Board of Directors reports that it has nominated these persons to serve on the corporation's Board of Directors:

- Kevin Robertson
- Todd Fukuda
- Jared Littel
- Pete Hanse
- Brain Medeiros
- Brian Potter
- Helen Sullivan
- Jared Silveira
- Shane Bickner
- Frank Zonneveld

No corporate officer received any nomination by voting-member petition by Oct. 1, 2019, the date on which nominations closed as provided in Article V, Section 4, of the corporation's bylaws.

### Declaration of Election of Those Nominated and Qualified

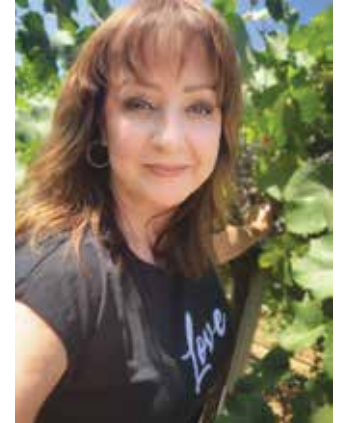
As provided in Article V, Section 6 of the corporation's bylaws, because the number of persons nominated is not more than the number to be elected to the corporation's Board of Directors, the corporation's president has declared that those persons named above, all of whom were nominated and are qualified to serve, have been elected without further action.

Brian Medeiros, President  
Shane Bickner, Corporate Secretary

## KCFB welcomes Paula Vinzant as new director of government and member relations

By Amy D. Fienen

Paula Vinzant spent the past year working as the development director for Farm Bureau's South Valley Caucus, but has transitioned to the Kings County Farm Bureau team as the director of government and member relations.



In this newly created position, Vinzant will focus on growing membership and securing event sponsorships to help ensure KCFB's growth and continued success. She'll be working with KCFB's newly formed legislative committee on issues that affect members, and will serve as a liaison between members and elected officials. She will also represent KCFB at community events.

"Farm Bureau is doing important work in Kings County on behalf of our farmers and ranchers, yet there remains a number of people who aren't aware of the contribution we're making in supporting the local economy," said KCFB Executive Director

*"Paula Vinzant" cont'd on page 7*

Let us take a crack at providing  
the best insurance for you!

### COVERAGE DEADLINES

Almond & Pistachio  
December 31, 2020

Walnut  
January 29, 2021



Contact us for a free quote!  
209-667-1557  
Toll Free 888-236-2357  
[contact@lccropinsurance.com](mailto:contact@lccropinsurance.com)

LG Crop Insurance Services Inc.  
175 South Thor Street  
Turlock, CA 95380  
License #0E83681





Focused exclusively on agriculture, we have the understanding and experience to customize financial solutions for your needs.

We're here for you — in the field, in the office, dedicated to your success.

Hanford: 559.584.5401  
Kingsburg: 559.897.5814



FOR AMERICA'S AGRICULTURALIST

Follow us   

GoldenStateFarmCredit.com

# Firestone

**IN-FIELD SERVICE  
WHEN YOU NEED IT MOST**

We are specially trained and fully equipped to meet your on-farm, in-field tire service and replacement needs  
Call us for on-farm deliveries and on-the-spot tire repair

## BILLINGSLEY TIRE INC

6 WEST D STREET  
LEMOORE CA 93245  
(559) 924-3481



www.billingsleytireinc.com

"Golf" cont'd from page 1

plays in their daily lives," said Harvest Classic co-chair Jonathan Garcia. "With your support, we can increase our efforts to ensure the future of agriculture is protected and that talented young people come home after college to advance the industry."

Each spring, KCFB awards \$1,000 scholarships to graduating seniors from Kings County who plan to pursue a career in agriculture. In 2020, we selected nine students we felt were worth investing in, as they are the industry's next generation of leaders. The Harvest Classic will help fund future scholarships.

To make this year's Harvest Classic a success, we're looking to our members and the community to support the event with sponsorships and by signing up to play in the tournament. Check-in for the Oct. 19 event begins at 9 a.m., with a shotgun start at 10 a.m. Entries are limited to the first 144 golfers to sign up, so please register early to ensure your spot.

We're grateful to J.C. Lansdowne for being this year's Harvest Classic Presenting Sponsor. Additional sponsorship opportunities range from \$250 to \$1,000. The cost to golf is \$125, or \$500 for a team. Registration for the Oct. 19 event is due by Oct. 9. For more information on how to get involved, please call the KCFB office, (559) 584-3557. 🏌️

“Neonicotinoid Restrictions” cont’d from page 1

other real classes of chemistry offering the needed control.”

Ference explained that since neonicotinoids represent an entire class of chemicals that are the backbone to controlling piercing and sucking pests, as well as true bugs, the impact to growers and their support chain will be substantial.

“These measures could potentially lead to the loss of crops, and at the very least, result in a reduction in quality, which means less money for the grower,” he said.

The proposed regulation includes four specific restrictions:

- 1) It would allow only one neonicotinoid to be applied to a field each year. Growers could choose from the permitted options but could not switch mid-year.
- 2) Applications would be restricted to only foliar applications or only soil applications.
- 3) No applications would be allowed to crops in bloom.
- 4) No applications would be allowed to indeterminate blooming citrus crops.

Additional restrictions would apply to crops that are highly attractive to bees and to fields using managed pollinators.

Cotton and tomatoes are Kings County’s third and sixth most profitable

commodities, respectively. Per the CDFAs report on the proposed regulations, the cotton acreage that could be treated with neonicotinoid would be reduced by about 60 percent. The statewide tomato treatment costs are estimated to increase by as much as 130 percent, or \$7.8 billion annually.

Ference said the proposed changes are another hurdle hindering farmers already struggling to produce the nation’s food supply amid increasing regulations.

“These regulations would limit growers’ ability to control pests when we’ve already lost some important technologies like chlorpyrifos,” he said. “We’re putting out a call to action for our members to respond with the specific ways these guidelines would be detrimental to their operations.

DPR is accepting public comments and feedback through Oct. 11. Comments can be made by e-mail to [neonics@cdpr.ca.gov](mailto:neonics@cdpr.ca.gov) or by leaving a voicemail message at 916-445-0003. This is the web address to the DPR site on the proposed regulations: <https://www.cdpr.ca.gov/docs/registration/reevaluation/chemicals/neonicotinoids.htm>

Lic. Class A & C57  
#826935

# Kaweah Pump, Inc.

General Engineering Contractor

SERVING:  
**AGRICULTURE • DAIRY • MUNICIPALITIES  
INDUSTRIAL • DOMESTIC**

**559.747.0755**

kaweahpump.com • kaweahwelldrilling.com  
info@kaweahpump.com

*Serving the entire  
San Joaquin Valley and  
San Luis Obispo County*





**DEVELOPMENT & REHABILITATION SERVICES**

- Well Video Surveys
- Well Development & Yield Testing
- Up to 1000HP Development Pumps
- Well Swaging • Swabbing • Brushing
- Acid Wash & Other Chemical Treatments
- Fishing Services • Well Abandonment

**CONSTRUCTION SERVICES**

- Agricultural Concrete Pads
- Custom Pump Facilities

**MACHINE SHOP SERVICES**

- Full Service Centrifugal Pump Machine Shop
- Custom Short Couple Lift Pump Fabrication
- Discharge Fabrication • Mid-Stretch Fabrication
- In-Field Welding, Pipe Repair & Fabrication

**WELL DRILLING**

- Air Rotary • Mud Rotary • Ag & Domestic

**ELECTRICAL SERVICES**



- Complete Pump Electrical Services
- Power Company Management
- Variable Frequency Drives
- Power Relocation to New Well • Electrical Panels
- Transformer Pads • New Services • Upgrades

**PUMP SERVICES**



- In-House Pump Designs
- Deep Well Vertical Turbines - All Makes & Models
- Deep Well Submersible Turbines - All Makes & Models
- Custom Built Lift Pumps
- Booster Pumps • Fertilizer Injection Pumps • Domestic Pumps






## Own ALL Your Assets

*You own your home. You own your business.  
Why not own the electricity that powers them?  
Unleash the power and the profitability of solar  
and unleash a new revenue stream.*

*Call us today for more information and ask for a  
FREE, NO OBLIGATION energy analysis.  
Or, visit us online.*

**559-410-8640**    [www.RSI.SOLAR](http://www.RSI.SOLAR)

# RENEWABLE SOLAR

*Exceptional People. Exceptional Performance.™*

**BUY LOCAL,  
BUY J.C. LANSDOWNE, INC.**



## Ag Commissioner's Compliance Report



Jimmy Hook,  
Agricultural  
Commissioner/Sealer

## The Ag Commissioner's Role in Seed Certification

Contributed by Lynda Schrupf, Deputy Agricultural Commissioner-Sealer

Seed certification is a method to follow or keep pedigree records on seeds released or approved by state agricultural experiment stations. It was found that without some plan or method, such as this, for keeping track of new varieties, the variety rapidly disappeared.

The seed certification service is dedicated to getting the seed increased under reasonable controls in order to make it easily available and at the same time to guarantee its identity to farmers.

The first and most obvious service that the certifying agency can perform for the research agronomists is that of increasing the supply of pure seed of improved varieties. These new varieties, no matter how superior, need much nurturing in their early stages. And even after they have become rather widely distributed and accepted, there continues to be need for sources of pure seed. Without a seed certification service, varieties tend to become mixed, contaminated and confused as to identity.

The partnership between the Agricultural Commissioner and California Crop Improvement Association (CCIA) partnership helps guarantee seed identity.

The CCIA, a nonprofit corporation, is officially recognized as the seed certifying agency under the California Seed Law CCR 3875. The mission of CCIA is to provide services and support research that promotes the improvement, production, distribution and use of superior quality seeds and other agricultural products.

The CCIA and Agricultural Commissioner offices collaborate on the following programs: Seed Certification, Identity Preserved Seed, Quality Assurance, Crop Isolation Mapping, Potato Certification, Organization for Economic Cooperation and Development Certification.

**Grower to Seed Company:** Harvester inspections are requested of Agricultural Commissioner staff by seed companies/growers prior to harvest when changing varieties or to a higher class of seed. The purpose of inspecting a harvester is to ensure that it is free of those seeds which might contaminate the certified seed to be harvested. Harvester inspections may be conducted by Agricultural Commissioner staff or an approved individual.

**Field to Conditioner:** Inter-agency (state), inter-county, or intra-county transfer certificates from field to conditioner are issued by Agricultural Commissioner staff.

At least once annually, accredited conditioners inspect seed conditioning equipment for freedom of seed when changing varieties or switching to a higher class of seed.

**Conditioner to Purchaser:** Inter-agency (state), inter-county, or intra-county transfer certificates from conditioner to purchaser are issued by Agricultural Commissioner staff.

Seed transfer certificates are used for the movement of untagged seed



between states, countries, counties, and within counties.

Inter-agency (state) transfers can be used to ship seed to any Association of Official Seed Certifying Agencies (AOSCA) member agency outside of California, including members outside of the United States.

Inter-county transfers are movement of seed between different counties within the state of California.

Intra-county transfers are movement of seed within a given county of California.

In 2019, the Kings County Department of Agriculture performed 76 harvester inspections and issued 10 inter-county seed transfers. Kings County seed crop acreage in 2019 was up about 3,000 acres from the previous year; however, not all of that increase is certified seed. The Kings County Department of Agriculture continues to provide harvester inspection services in partnership with the California Crop Improvement Association to ensure that growers will have sustainable access to pure certified seed varieties.

For more information or should you have any questions, please contact the Kings County Department of Agriculture, [agstaff@co.kings.ca.us](mailto:agstaff@co.kings.ca.us) or (559) 852-2830. 🐾

“Paula Vinzant” cont’d from page 3

Dusty Ference. “Paula’s work with the South Valley Caucus demonstrated her ability carry our message and grow our membership base, allowing us to continue advocating for our members.”

A fourth-generation Texan, Vinzant studied communication at Texas Tech. She moved to California 28 years ago and now calls Visalia home. After spending nearly 20 years running a staffing service, she got her start in politics in 2010 working for Michael Reagan. She went on to become the political affairs and finance director for the California State Assembly Republican Caucus. In 2013, she went to work as the finance director and fundraiser for former Senator Andy Vidak. She worked as his district director until he lost his reelection bid in 2018.

Vinzant said she is looking forward to focusing her efforts on one county.

I love Kings County Farm Bureau’s creativity and vision for moving the organization into the future,” Vinzant said. “I’m looking forward to helping people understand the many benefits that come with joining and supporting this organization.”

She can be reached at [pvinzant@kcfb.org](mailto:pvinzant@kcfb.org). 🐾

## Kings County Rural Crime Report

### *Chemical, solar field and Conex box thefts on the rise*

Contributed by Detective Ben Moore

August was another busy month for the Sheriff's Office, especially the Rural Crimes Unit. We began the month assisting with an investigation at Simplot, where \$200,000 worth of chemicals were stolen. Currently there are no suspects in custody and the chemicals have not been recovered.

The unit conducted follow-up work to the burglary at a solar field located at 19498 Kent. The unit located a cigarette butt at the scene that is believed to belong to the suspect. It will be submitted to the DOJ lab for DNA testing. We also assisted patrol with investigating a theft from a solar field at 17189 Avenal Cutoff Rd. The unit has seen an uptick in thefts of chemicals, burglaries of Conex boxes and solar field thefts.

With the assistance of SWAT, patrol, detectives and the Kings County Major Crimes Task Force, the Rural Crimes unit executed a search warrant at 12566 Jackson Ave. for an illegal marijuana cultivation operation. A total of five people were arrested, two of which were apprehended by K-9 deployment. Approximately 3,000 plants were eradicated and a pistol grip shotgun and shells were recovered. A working butane honey oil lab was located as well, so the Fresno team was called in to dismantle it.

The unit responded to a grape theft at a Tos Farms vineyard in the 7500 block of Dover Avenue. The unit deployed game cameras to the vineyard and was able to identify Susan Fields and Odette Uhaldeborde as the suspects. The unit

arrested both suspects, but the grapes were not recovered. Tos Farms estimated they suffered a monetary loss of around \$15,000.

We want to continue reminding everyone about the Owner Applied Number (OAN) program we offer to the public. We will issue you a California OAN number if you don't have one already, and we will stamp your equipment with that number at no charge. Once again, thank you for staying vigilant and for your assistance during our investigations. If you have questions or concerns, please call any time. 🙌

**Task Force Sergeant Rod Shulman: 559-469-4004**

**Detective Carlos Santos: 559-904-6893**

**Detective Ben Moore: 559-589-3629**

**Detective Kody Holt: 559-369-8928**



## KCFB Virtual Showcase

Join **Friend of Farm Bureau Excellence Medical Group** and **KCFB** for cocktails & conversation



Join us for a new, regularly scheduled virtual event, featuring a *Friend of Farm Bureau* sponsor with a "signature" cocktail selected by the sponsor. There will be fun conversation, giveaways throughout the event, and a discount code for products and services.

**Thursday, September 24th**

**5:30 pm**

**featured sponsor: Excellence Medical Group**

**featured cocktail: the Cosmopolitan**

<https://www.bonappetit.com/recipe/cosmopolitan>

**RSVP to [kcfb@kcfb.org](mailto:kcfb@kcfb.org) by 5:00 pm September 23 and a link will be emailed to you**



## Cosmopolitan

Recipe by Chris Morocco Photo by Ted Cavanaugh [www.bonappetit.com](http://www.bonappetit.com)

### INGREDIENTS

2 ounces vodka  
1 ounce cranberry juice cocktail  
¾ ounce fresh lime juice  
¾ ounce triple sec  
Orange twist (for serving)

### RECIPE PREPARATION

Combine vodka, cranberry juice, lime juice, and triple sec in a cocktail shaker. Fill shaker with ice, cover, and shake vigorously until outside of shaker is very cold, about 20 seconds. Strain cocktail through a Hawthorne strainer or a slotted spoon into a martini glass. Garnish with orange twist.





Thanks to KCFB's  
New & Renewed Members

**RENEWED AGRICULTURAL**

- |                    |                     |                          |
|--------------------|---------------------|--------------------------|
| Brian Sewell       | Joseph Freitas      | Recurrent Energy         |
| Charlene Abbott    | K & S Walnuts       | Robert Ritchie           |
| Clif Van Groningen | Kevin Robertson     | Star Nut Co              |
| Dusty Howze        | Kirk Yergat         | Tony Martin Dairy        |
| Fred Holt          | Mark Barlow         | Tri Counties Walnuts Inc |
| Jacob Sheeley      | Megan Sullivan      | Vincent Coelho           |
| James Vidak        | Mike Kochergen      | Wayne Wisecarver         |
| Jennifer Nomura    | NERU Properties Inc | Westbase Farms           |
| England            | Ranch Management    | Western States           |
| Jeremy Freitas     | LLC                 | Petroleum                |

**RENEWED BUSINESS SUPPORT**

- |                           |                             |                                       |
|---------------------------|-----------------------------|---------------------------------------|
| Blair Ground Services Inc | Mitchell Insurance Services | Valley Pacific Petroleum Services Inc |
| Connor Kingman            | Sawtelle & Rosprim          | Verdegal Brothers Inc                 |
| Kings County EDC          | Machine Shop                |                                       |
| Mid Valley Disposal       | Summerhill Dairy            |                                       |

**RENEWED ASSOCIATE**

- |                   |               |
|-------------------|---------------|
| Donna Elliott     | Leo Parolini  |
| Kuckenbaker Dairy | Timothy Simon |

**CARVER**  
PUMP SERVICE  
Serving The Central Valley

BBB ACCREDITED BUSINESS

CELEBRATING OVER 40 YEARS

24-Hour Service

Lic #547257

**(855)622-7837 TOLL FREE**

**DOMESTIC & IRRIGATION PUMPS • SALES • REPAIRS**

VISA SINCE 1976 MasterCard

[www.carver-pump.com](http://www.carver-pump.com)

**PACIFIC AG**  
INSURANCE AGENCY, INC.  
License # 0C84245

*Allow us to utilize our background, knowledge, and expertise to go to work for you...*

Commercial | Farm | Workers' Compensation | Tribal | Life & Health | Employee Benefits | Home | Auto & More

Hanford 559.584.3391      Corcoran 559.992.1245      Chowchilla 559.665.3434

# Directory of Farm Bureau Supporting Business Members

These businesses and organizations support the agricultural industry and the Kings County Farm Bureau. Please support them and tell them you are a Farm Bureau member. Call us at 584-3557. Friends of Farm Bureau sponsors are noted in **bold** listings. By joining FB as a business member, your business is added to this directory.

## ACCOUNTING

<b>Bressler &amp; Company Certified Public Accountants</b>	<b>559-924-1225</b>
<b>M. Green and Company LLP</b>	<b>559-584-2751</b>

## ASSOCIATIONS

California Women for Agriculture	559-737-8899
Kings River Conservation District	559-237-5567

## AUTO DEALERS & REPAIR

<b>Billingsley Tire</b>	<b>559-924-3481</b>
Jones Collision Center	559-924-2169
Maaco Collision & Auto Painting	559-924-3000
Richard's Chevrolet-Buick	559-992-3158

## BANKING/FINANCIAL

Bank of the Sierra	559-585-6700
Bank of the West	559-802-4066
Central Valley Community Bank	559-323-3493
Citizens Business Bank	866-578-0658
<b>Farm Credit West</b>	<b>559-584-2681</b>
<b>Golden State Farm Credit</b>	<b>559-584-5401</b>
<b>Rabobank</b>	<b>559-587-0218</b>

## BROKERS & COMMODITIES

Baker Commodities Inc.	559-582-0271
Buttonwillow Warehouse Co.	559-992-5120
Calcot Ltd.	661-327-5961
Overland Stockyards	559-582-0404
Penny Newman Grain Company	559-448-8800
<b>Tulare Lake Compost</b>	<b>559-840-4368</b>

## CHEMICALS & APPLICATORS

Blair Air Services Inc./	
Blair Ground Services	559-924-1276
Crop Production Services	559-584-5583
Diversified Crop Services	559-582-5644
Gar Bennett LLC	559-638-6311
<b>Innovative Ag Services LLC</b>	<b>559-731-4924</b>
Lakeland Dusters	559-992-5716
SNF Agriculture	559-309-4301
TriCal Inc.	559-673-5237
<b>Valley Ag Spraying</b>	<b>559-772-5515</b>
<b>Verdegaal Brothers Inc.</b>	<b>559-582-9205</b>

## CUSTOM SERVICES

All Valley Printing/	
Treefrog Print Shop	559-584-5444
<b>Danell Brothers Inc.</b>	<b>559-582-1251</b>
Dias & Fragoso Inc.	559-584-8036
Garcia & Sons Hay Harvesting	559-707-4420
Hanford Roofing Company	559-582-5607
McCann & Sons Hay Service	559-925-9110
<b>Mello Chipping</b>	<b>559-589-0300</b>
Netto Ag Inc.	559-585-2097
Stoney's Sand & Gravel	559-924-9229
Swinger Pruning Services	559-816-7711
Warmerdam Orchard Services	559-924-4662

## DAIRIES/DAIRY SUPPLIERS

<b>Kings Dairy Supply Inc.</b>	<b>559-582-9459</b>
<b>Summerhill Dairy</b>	<b>559-468-6554</b>
Vet Pharmaceutical Inc.	559-582-6800

## EQUIPMENT DEALERS & REPAIR

<b>Hanford Equipment</b>	<b>559-582-0443</b>
Lawrence Tractor Co.	559-582-9002
Linder Equipment Co.	559-685-5000
<b>Quality Machinery Center</b>	<b>559-707-1638</b>
Quinn Company	559-992-2193

## FARM SUPPLY

AgSeeds Unlimited	559-923-1800
Evangelho Seed Co.	559-324-9554
West Valley Supply	559-924-3442

## FARMS & RANCHES

Gary Robinson	559-779-5541
Grabow Farming	559-816-4590
<b>J.G. Boswell Co.</b>	<b>559-992-5011</b>
<b>Keenan Farms</b>	<b>559-945-1400</b>
Miya Farms	559-309-3300
<b>Stone Land Co.</b>	<b>559-945-2205</b>
<b>Sullivan Farming LLC</b>	<b>559-289-2452</b>
<b>Summerhill Dairy</b>	<b>559-804-8148</b>
Taylor Farms	559-584-3798

## FOOD SERVICES

Avila Acres Country Gourmet	559-584-5935
Eddie's Catering	559-707-8796
Kings River Produce	559-587-9387
Pizza Factory	559-992-3148
Superior Dairy	559-582-0481

## INSURANCE SERVICES

<b>Bacome Insurance</b>	<b>559-584-3323</b>
Carl Nelson Insurance	559-584-4495
Der Manouel Insurance Group	559-447-4600
Golden State Crop & Insurance Services	559-587-9007
<b>Mackey &amp; Mackey Insurance Agency</b>	<b>559-583-9393</b>
Mitchell Insurance Services	559-713-1315
<b>Pacific Ag Insurance Agency</b>	<b>559-584-3391</b>
<b>The Zenith</b>	<b>877-581-8237</b>

## IRRIGATION/PUMPS/WELLS

Carver Pump	855-622-7837
Grabow Well Drilling Inc.	559-362-5172
Kaweah Pump Inc.	559-747-0755
Kings County Water District	559-584-6412
<b>Laguna Irrigation District</b>	<b>559-923-4239</b>
Lakeside Irrigation Water District	559-584-3396
Myers Brothers Well Drilling Inc.	559-582-9031
Myers Well Drilling	559-906-0930
<b>Rain for Rent/Westside Pump</b>	<b>559-693-4315</b>
Westlands Water District	559-905-6736

## LABOR

Sunrise Farm Labor	559-945-2292
--------------------	--------------

## MANUFACTURES

Dean Beck's Machine Shop	559-582-4144
Jim Harp's Stainless Steel Welding	559-582-6011
<b>Morgan &amp; Slates Manufacturing &amp; Supplies</b>	<b>559-582-4417</b>
R-N-R Welding	559-584-0213
Sawtelle & Rosprim Machine Co.	559-992-2117
Smith Welding Shop	559-584-8652

## PETROLEUM

Buford Oil Co. Inc.	559-582-9028
Dassel's Petroleum	559-582-8515
Gary V. Burrows Inc.	559-924-2064
<b>J.C. Lansdowne Inc.</b>	<b>559-651-1760</b>
Roe Oil Co.	559-584-5690
Valley Pacific Petroleum	559-732-8381

## PROCESSORS

County Line Gin Inc.	559-854-7489
<b>Keenan Farms</b>	<b>559-945-1400</b>
<b>Marquez Brothers International, Inc.</b>	<b>559-584-8000</b>
<b>Olam SVI</b>	<b>559-584-2711</b>
Warmerdam Packing LP	559-584-9211

## PROFESSIONAL SERVICES

<b>Dias Law Firm Inc.</b>	<b>559-585-7330</b>
<b>Griswold, LaSalle, Cobb, Dowd &amp; Gin LLP</b>	<b>559-584-6656</b>
<b>Kahn, Soares &amp; Conway LLP</b>	<b>559-584-3337</b>
Kings County EDC	559-585-3576
Zumwalt-Hansen & Associates Inc.	559-582-1056

## REAL ESTATE SERVICES

<b>Pearson Realty</b>	<b>559-732-7300</b>
Sierra View Realty	559-410-5557

## SOLAR ENERGY

CalCom Solar	661-234-0978
<b>Coldwell Solar</b>	<b>888-705-5055</b>
<b>First Solar</b>	<b>415-935-2507</b>
REC Solar	717-515-4519
<b>Recurrent Energy</b>	<b>415-675-1500</b>
<b>Renewable Solar</b>	<b>559-816-5088</b>

## TRANSPORTATION

E & B Bulk Transportation	559-582-9135
Mesa Alta Transportation	559-250-1270
Mid Valley Disposal	559-237-9425

## UTILITIES

<b>Pacific Gas &amp; Electric</b>	<b>559-263-5308</b>
unWired Broadband	844-650-3278

# FRIENDS *of* FARM BUREAU

## DIAMOND



**Nationwide**  
is on your side



## Platinum



## Gold

All Valley Printing  
Bacome Insurance Agency  
Dias Law Firm Inc.  
Gar Bennett LLC

J.C. Lansdowne Inc.  
M Green & Company LLP  
Pacific Gas & Electric  
Renewable Solar

Tachi Palace Casino Resort  
The Wonderful Company  
Verdegaal Brothers

## Silver

Coldwell Solar Inc.  
Danell Custom Harvesting  
Excellence Medical Group  
Griswold, LaSalle, Cobb, Dowd & Gin LLP  
Helena Agri-Enterprises LLC  
J.G. Boswell Company Inc.  
JKB Energy Inc.

Kahn, Soares & Conway LLP  
Mello Chipping  
Morgan & Slaters Manufacturing & Supplies  
Olam Spices & Vegetable Ingredients  
Pacific Ag Insurance  
Quality Machinery Center  
Rain for Rent

Southern California Edison  
Summerhill Dairy  
Stone Land Co.  
S&W Seed Company  
Tulare Lake Basin Water Storage District  
Wells Fargo Bank

## Bronze

Agland Protective Services  
Billingsley Tire Inc.  
Bressler & Company Certified Public Accountants  
CalWest Rain  
Central Valley Energy Coalition  
Garton Tractor

Granger Water Specialties  
Grower Direct Nut Company  
Hanford Equipment Co.  
Innovative Ag Services LLC  
JP Honey Farms  
Keenan Farms  
Keller Motors

Kings Dairy Supply Inc.  
Laguna Irrigation District  
Mello Chipping  
Plain Insane Graphix  
Pearson Realty Inc.  
Rabobank  
Richard's Chevrolet

Schuil & Associates  
Sullivan Farming LLC  
Tulare Lake Compost  
Valley Ag Spraying  
Wilbur Ellis Inc.

# Financing your future success

**Farm Credit West supports pioneering innovations** with reliable financial solutions for your farm, ranch, or agribusiness. It's the foundation of our timeless commitment to the future of agriculture.

**DINUBA**  
559.591.9378

**HANFORD**  
559.584.2681

**TULARE**  
559.684.1478



[FarmCreditWest.com](http://FarmCreditWest.com)



**FARM CREDIT WEST®**

Committed. Experienced. Trusted.

